

RPL13 antibody - C-terminal region

Rabbit Polyclonal Antibody

Catalog # AI12091

Product Information

Application	WB
Primary Accession	P26373
Other Accession	NM_000977 , NP_000968
Reactivity	Human, Mouse, Rat, Rabbit, Zebrafish, Dog, Guinea Pig, Horse, Bovine
Predicted	Human, Mouse, Dog
Host	Rabbit
Clonality	Polyclonal
Calculated MW	24261

Additional Information

Gene ID	6137
Alias Symbol	BBC1, D16S444E, MGC71373, L13, D16S44E
Other Names	60S ribosomal protein L13, Breast basic conserved protein 1, RPL13, BBC1
Format	Liquid. Purified antibody supplied in 1x PBS buffer with 0.09% (w/v) sodium azide and 2% sucrose.
Reconstitution & Storage	Add 100 ul of distilled water. Final anti-RPL13 antibody concentration is 1 mg/ml in PBS buffer with 2% sucrose. For longer periods of storage, store at 20°C. Avoid repeat freeze-thaw cycles.
Precautions	RPL13 antibody - C-terminal region is for research use only and not for use in diagnostic or therapeutic procedures.

Protein Information

Name	RPL13
Synonyms	BBC1
Function	Component of the ribosome, a large ribonucleoprotein complex responsible for the synthesis of proteins in the cell (PubMed: 23636399 , PubMed: 31630789 , PubMed: 32669547). The small ribosomal subunit (SSU) binds messenger RNAs (mRNAs) and translates the encoded message by selecting cognate aminoacyl-transfer RNA (tRNA) molecules (Probable). The large subunit (LSU) contains the ribosomal catalytic site termed the peptidyl transferase center (PTC), which catalyzes the formation of peptide bonds, thereby polymerizing the amino acids delivered by tRNAs into a polypeptide chain (Probable). The nascent polypeptides leave the ribosome through a

tunnel in the LSU and interact with protein factors that function in enzymatic processing, targeting, and the membrane insertion of nascent chains at the exit of the ribosomal tunnel (Probable). As part of the LSU, it is probably required for its formation and the maturation of rRNAs (PubMed:[31630789](#)). Plays a role in bone development (PubMed:[31630789](#)).

Cellular Location

Cytoplasm

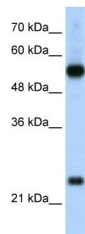
Tissue Location

Higher levels of expression in benign breast lesions than in carcinomas.

References

Bi,W.,(2002)GenomeRes.12(5),713-728ReconstitutionandStorage:Forshorttermuse,storeat2-8Cupto1week.For longtermstorage,storeat-20Cinsmallaliquotstopreventfreeze-thawcycles.

Images



WB Suggested Anti-RPL13 Antibody Titration: 2.5µg/ml
Positive Control: HepG2 cell lysate
There is BioGPS gene expression data showing that RPL13 is expressed in HepG2

Please note: All products are 'FOR RESEARCH USE ONLY. NOT FOR USE IN DIAGNOSTIC OR THERAPEUTIC PROCEDURES'.