

SNRPB antibody - middle region

Rabbit Polyclonal Antibody

Catalog # AI12093

Product Information

Application	WB
Primary Accession	Q66K91
Other Accession	NM_003091 , NP_003082
Reactivity	Human, Mouse, Rat, Rabbit, Zebrafish, Pig, Dog, Guinea Pig, Horse, Bovine
Predicted	Human, Mouse, Rat, Zebrafish, Dog, Guinea Pig
Host	Rabbit
Clonality	Polyclonal
Calculated MW	24 KDa

Additional Information

Alias Symbol	COD, SNRPB1, SmB/SmB', snRNP-B, SmB/B', Sm-B/B'
Format	Liquid. Purified antibody supplied in 1x PBS buffer with 0.09% (w/v) sodium azide and 2% sucrose.
Reconstitution & Storage	Add 50 ul of distilled water. Final anti-SNRPB antibody concentration is 1 mg/ml in PBS buffer with 2% sucrose. For longer periods of storage, store at 20°C. Avoid repeat freeze-thaw cycles.
Precautions	SNRPB antibody - middle region is for research use only and not for use in diagnostic or therapeutic procedures.

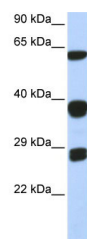
Protein Information

References

Ong, S.E., (2004) Nat. Methods 1(2), 119-126 Reconstitution and Storage: For short term use, store at 2-8°C up to 1 week. For long term storage, store at -20°C in small aliquots to prevent freeze-thaw cycles.

Images

WB Suggested Anti-SNRPB Antibody Titration: 0.2-1 µg/ml
ELISA Titer: 1:312500
Positive Control: 293T cell lysate
SNRPB is strongly supported by BioGPS gene expression data to be expressed in Human HEK293T cells



Please note: All products are 'FOR RESEARCH USE ONLY. NOT FOR USE IN DIAGNOSTIC OR THERAPEUTIC PROCEDURES'.