

PRPS2 antibody - middle region

Rabbit Polyclonal Antibody

Catalog # AI12099

Product Information

Application	WB, IHC
Primary Accession	P11908
Other Accession	NM_002765 , NP_002756
Reactivity	Human, Mouse, Rat, Rabbit, Zebrafish, Pig, Dog, Guinea Pig, Horse, Bovine
Predicted	Human, Mouse, Rat, Pig, Dog, Guinea Pig
Host	Rabbit
Clonality	Polyclonal
Calculated MW	34769

Additional Information

Gene ID	5634
Alias Symbol	PRS II, PRSII
Other Names	Ribose-phosphate pyrophosphokinase 2, 2.7.6.1, PPRibP, Phosphoribosyl pyrophosphate synthase II, PRS-II, PRPS2
Format	Liquid. Purified antibody supplied in 1x PBS buffer with 0.09% (w/v) sodium azide and 2% sucrose.
Reconstitution & Storage	Add 50 ul of distilled water. Final anti-PRPS2 antibody concentration is 1 mg/ml in PBS buffer with 2% sucrose. For longer periods of storage, store at 20°C. Avoid repeat freeze-thaw cycles.
Precautions	PRPS2 antibody - middle region is for research use only and not for use in diagnostic or therapeutic procedures.

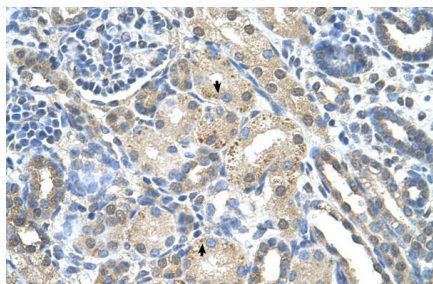
Protein Information

Name	PRPS2
Function	Catalyzes the synthesis of phosphoribosylpyrophosphate (PRPP) that is essential for nucleotide synthesis.

References

Ishijima, S., (1997) Biochim. Biophys. Acta 1342(1), 28-36
Reconstitution and Storage: For short term use, store at 2-8°C up to 1 week. For long term storage, store at -20°C in small aliquots to prevent freeze-thaw cycles.

Images



Rabbit Anti-PRPS2 Antibody
Paraffin Embedded Tissue: Human Kidney
Cellular Data: Epithelial cells of renal tubule
Antibody Concentration: 4.0-8.0 $\mu\text{g/ml}$
Magnification: 400X

Please note: All products are 'FOR RESEARCH USE ONLY. NOT FOR USE IN DIAGNOSTIC OR THERAPEUTIC PROCEDURES'.