

ASPN antibody - middle region

Rabbit Polyclonal Antibody

Catalog # AI12107

Product Information

Application	WB, IHC
Primary Accession	Q5TBF3
Other Accession	NM_017680 , NP_060150
Reactivity	Human, Mouse, Rat, Rabbit, Zebrafish, Pig, Dog, Guinea Pig, Horse, Bovine
Predicted	Human, Mouse, Rat, Rabbit, Pig, Chicken, Dog, Horse, Bovine
Host	Rabbit
Clonality	Polyclonal
Calculated MW	42 KDa

Additional Information

Alias Symbol	FLJ20129, PLAP1, SLRR1C, OS3, PLAP-1
Format	Liquid. Purified antibody supplied in 1x PBS buffer with 0.09% (w/v) sodium azide and 2% sucrose.
Reconstitution & Storage	Add 100 ul of distilled water. Final anti-ASPN antibody concentration is 1 mg/ml in PBS buffer with 2% sucrose. For longer periods of storage, store at 20°C. Avoid repeat freeze-thaw cycles.
Precautions	ASPN antibody - middle region is for research use only and not for use in diagnostic or therapeutic procedures.

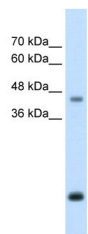
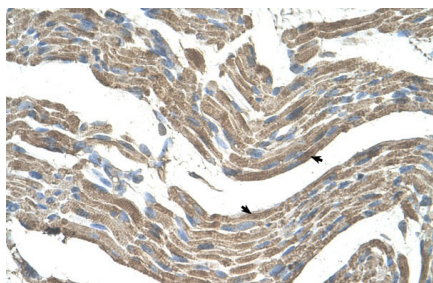
Protein Information

References

Kizawa, H., (2005) Nat. Genet. 37(2), 138-144
Reconstitution and Storage: For short term use, store at 2-8°C up to 1 week. For long term storage, store at -20°C in small aliquots to prevent freeze-thaw cycles.

Images

Human Muscle



WB Suggested Anti-ASPN Antibody Titration: 2.5µg/ml
Positive Control: HepG2 cell lysate

Please note: All products are 'FOR RESEARCH USE ONLY. NOT FOR USE IN DIAGNOSTIC OR THERAPEUTIC PROCEDURES'.