

LRP2BP antibody - middle region

Rabbit Polyclonal Antibody

Catalog # AI12111

Product Information

Application	WB
Primary Accession	A6NJR7
Other Accession	NM_018409 , NP_060879
Reactivity	Human, Mouse, Rat, Rabbit, Zebrafish, Pig, Dog, Guinea Pig, Horse, Bovine
Predicted	Human, Mouse, Rat, Rabbit, Pig, Chicken, Dog, Horse, Bovine
Host	Rabbit
Clonality	Polyclonal
Calculated MW	38 KDa

Additional Information

Alias Symbol	DKFZp761O0113
Format	Liquid. Purified antibody supplied in 1x PBS buffer with 0.09% (w/v) sodium azide and 2% sucrose.
Reconstitution & Storage	Add 50 ul of distilled water. Final anti-LRP2BP antibody concentration is 1 mg/ml in PBS buffer with 2% sucrose. For longer periods of storage, store at 20°C. Avoid repeat freeze-thaw cycles.
Precautions	LRP2BP antibody - middle region is for research use only and not for use in diagnostic or therapeutic procedures.

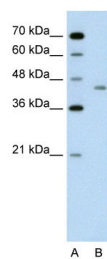
Protein Information

References

Li,J.,(2005)Cell.Mol.Biol.Lett.10(1),185-193ReconstitutionandStorage:Forshorttermuse,storeat2-8Cupto1week. Forlongtermstorage,storeat-20Cinsmallaliquotstopreventfreeze-thawcycles.

Images

WB Suggested Anti-LRP2BP Antibody Titration: 0.2-1
µg/ml
Positive Control: Jurkat cell lysate



Please note: All products are 'FOR RESEARCH USE ONLY. NOT FOR USE IN DIAGNOSTIC OR THERAPEUTIC PROCEDURES'.