

TBC1D16 antibody - N-terminal region

Rabbit Polyclonal Antibody

Catalog # AI12113

Product Information

Application	WB
Primary Accession	Q8TBP0
Other Accession	NM_019020 , NP_061893
Reactivity	Human, Mouse, Rat, Zebrafish, Dog, Guinea Pig, Bovine
Predicted	Human, Mouse, Zebrafish, Pig, Chicken, Bovine
Host	Rabbit
Clonality	Polyclonal
Calculated MW	86372

Additional Information

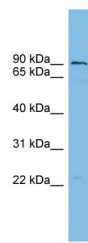
Gene ID	125058
Alias Symbol	FLJ20748, MGC25062
Other Names	TBC1 domain family member 16, TBC1D16
Format	Liquid. Purified antibody supplied in 1x PBS buffer with 0.09% (w/v) sodium azide and 2% sucrose.
Reconstitution & Storage	Add 50 ul of distilled water. Final anti-TBC1D16 antibody concentration is 1 mg/ml in PBS buffer with 2% sucrose. For longer periods of storage, store at 20°C. Avoid repeat freeze-thaw cycles.
Precautions	TBC1D16 antibody - N-terminal region is for research use only and not for use in diagnostic or therapeutic procedures.

Protein Information

Name	TBC1D16
Function	May act as a GTPase-activating protein for Rab family protein(s).

Images

WB Suggested Anti-TBC1D16 Antibody Titration: 0.2-1
µg/ml
ELISA Titer: 1:312500
Positive Control: HT1080 cell lysate



Please note: All products are 'FOR RESEARCH USE ONLY. NOT FOR USE IN DIAGNOSTIC OR THERAPEUTIC PROCEDURES'.