

# PAPPA2 antibody - middle region

Rabbit Polyclonal Antibody

Catalog # AI12115

## Product Information

---

<b>Application</b>	WB
<b>Primary Accession</b>	<a href="#">Q9BXP8</a>
<b>Other Accession</b>	<a href="#">NM_021936</a> , <a href="#">NP_068755</a>
<b>Reactivity</b>	Human
<b>Predicted</b>	Human
<b>Host</b>	Rabbit
<b>Clonality</b>	Polyclonal
<b>Calculated MW</b>	198539

## Additional Information

---

<b>Gene ID</b>	60676
<b>Alias Symbol</b> <b>Other Names</b>	PAPP-A2, PAPPE, PLAC3 Pappalysin-2, 3.4.24.-, Pregnancy-associated plasma protein A2, PAPP-A2, Pregnancy-associated plasma protein E1, PAPP-E, PAPPA2, PLAC3
<b>Format</b>	Liquid. Purified antibody supplied in 1x PBS buffer with 0.09% (w/v) sodium azide and 2% sucrose.
<b>Reconstitution &amp; Storage</b>	Add 50 ul of distilled water. Final anti-PAPPA2 antibody concentration is 1 mg/ml in PBS buffer with 2% sucrose. For longer periods of storage, store at 20°C. Avoid repeat freeze-thaw cycles.
<b>Precautions</b>	PAPPA2 antibody - middle region is for research use only and not for use in diagnostic or therapeutic procedures.

## Protein Information

---

<b>Name</b>	PAPPA2
<b>Synonyms</b>	PLAC3
<b>Function</b>	Metalloproteinase which specifically cleaves insulin-like growth factor binding protein (IGFBP)-5 at the '163-Ser- -Lys-164' bond. Shows limited proteolysis toward IGFBP-3.
<b>Cellular Location</b>	Secreted.
<b>Tissue Location</b>	Expressed abundantly in placenta, and non-pregnant mammary gland with low expression in the kidney, fetal brain and pancreas.

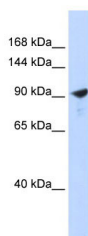
## References

---

Gregory, S.G., (2006) Nature 441(7091), 315-321 Reconstitution and Storage: For short term use, store at 2-8°C up to 1 week. For long term storage, store at -20°C in small aliquots to prevent freeze-thaw cycles.

## Images

---



WB Suggested Anti-PAPPA2 Antibody Titration: 0.2-1  $\mu$ g/ml

ELISA Titer: 1:12500

Positive Control: 293T cell lysate

PAPPA2 is strongly supported by BioGPS gene expression data to be expressed in Human HEK293T cells

Please note: All products are 'FOR RESEARCH USE ONLY. NOT FOR USE IN DIAGNOSTIC OR THERAPEUTIC PROCEDURES'.