

DCUN1D1 antibody - N-terminal region

Rabbit Polyclonal Antibody

Catalog # AI12120

Product Information

Application	WB, IHC
Primary Accession	Q96GG9
Other Accession	NM_020640 , NP_065691
Reactivity	Human, Mouse, Rat, Rabbit, Dog, Guinea Pig, Horse, Bovine
Predicted	Human, Mouse, Rat, Rabbit, Chicken, Dog, Horse
Host	Rabbit
Clonality	Polyclonal
Calculated MW	30124

Additional Information

Gene ID	54165
Alias Symbol	DCUN1L1, RP42, SCRO, Tes3, DCNL1, SCCRO
Other Names	DCN1-like protein 1, DCUN1 domain-containing protein 1, Defective in cullin neddylation protein 1-like protein 1, Squamous cell carcinoma-related oncogene, DCUN1D1, DCUN1L1, RP42, SCCRO
Format	Liquid. Purified antibody supplied in 1x PBS buffer with 0.09% (w/v) sodium azide and 2% sucrose.
Reconstitution & Storage	Add 50 ul of distilled water. Final anti-DCUN1D1 antibody concentration is 1 mg/ml in PBS buffer with 2% sucrose. For longer periods of storage, store at 20°C. Avoid repeat freeze-thaw cycles.
Precautions	DCUN1D1 antibody - N-terminal region is for research use only and not for use in diagnostic or therapeutic procedures.

Protein Information

Name	DCUN1D1 (HGNC:18184)
Function	Part of an E3 ubiquitin ligase complex for neddylation (PubMed: 18826954). Promotes neddylation of cullin components of E3 cullin-RING ubiquitin ligase complexes (PubMed: 19617556 , PubMed: 23201271 , PubMed: 23401859 , PubMed: 26906416). Acts by binding to cullin-RBX1 complexes in the cytoplasm and promoting their nuclear translocation, enhancing recruitment of E2-NEDD8 (UBE2M-NEDD8) thioester to the complex, and optimizing the orientation of proteins in the complex to allow efficient transfer of NEDD8 from the E2 to the cullin substrates. Involved in the release of inhibitory effects of CAND1 on cullin-RING ligase E3 complex assembly and activity

(PubMed:[25349211](#), PubMed:[28581483](#)). Also acts as an oncogene facilitating malignant transformation and carcinogenic progression (By similarity).

Cellular Location

Nucleus. Cytoplasm Note=The ubiquitinated form is localized in the cytoplasm

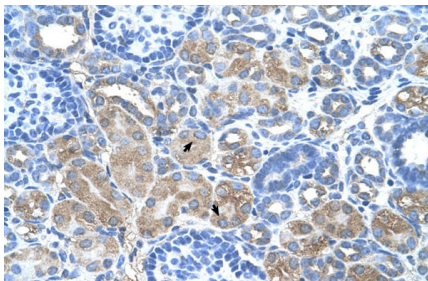
Tissue Location

Expressed in pancreas, kidney, placenta, brain and heart. Weakly or not expressed in liver, skeletal muscle and lung Strongly overexpressed in thyroid tumors, bronchioloalveolar carcinomas, and malignant tissues of squamous cell carcinoma of the oral tongue. Not overexpressed in aggressive adrenocortical carcinomas

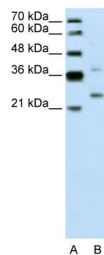
References

Kurz,T.,(2005)Nature435(7046),1257-1261ReconstitutionandStorage:Forshorttermuse,storeat2-8Cupto1week. Forlongtermstorage,storeat-20Cinsmallaliquotstopreventfreeze-thawcycles.

Images



Human kidney



WB Suggested Anti-DCUN1D1 Antibody Titration: 0.2-1 μ g/ml

Positive Control: Jurkat cell lysate

DCUN1D1 is supported by BioGPS gene expression data to be expressed in Jurkat

Please note: All products are 'FOR RESEARCH USE ONLY. NOT FOR USE IN DIAGNOSTIC OR THERAPEUTIC PROCEDURES'.