

# Nrbf2 antibody - N-terminal region

Rabbit Polyclonal Antibody

Catalog # AI12136

## Product Information

---

<b>Application</b>	WB
<b>Primary Accession</b>	<a href="#">Q8VCQ3</a>
<b>Other Accession</b>	<a href="#">NM_001036293</a> , <a href="#">NP_001031370</a>
<b>Reactivity</b>	Human, Mouse, Rat, Rabbit, Zebrafish, Dog, Horse, Bovine
<b>Predicted</b>	Human, Mouse, Rat, Rabbit, Zebrafish, Pig, Dog, Horse, Bovine
<b>Host</b>	Rabbit
<b>Clonality</b>	Polyclonal
<b>Calculated MW</b>	32501

## Additional Information

---

<b>Gene ID</b>	641340
<b>Alias Symbol</b>	NRBF-2
<b>Other Names</b>	Nuclear receptor-binding factor 2, NRBF-2, Nrbf2
<b>Format</b>	Liquid. Purified antibody supplied in 1x PBS buffer with 0.09% (w/v) sodium azide and 2% sucrose.
<b>Reconstitution &amp; Storage</b>	Add 50 ul of distilled water. Final anti-Nrbf2 antibody concentration is 1 mg/ml in PBS buffer with 2% sucrose. For longer periods of storage, store at 20°C. Avoid repeat freeze-thaw cycles.
<b>Precautions</b>	Nrbf2 antibody - N-terminal region is for research use only and not for use in diagnostic or therapeutic procedures.

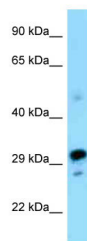
## Protein Information

---

<b>Name</b>	Nrbf2
<b>Function</b>	May modulate transcriptional activation by target nuclear receptors. Can act as transcriptional activator (in vitro) (By similarity).
<b>Cellular Location</b>	Nucleus {ECO:0000250 UniProtKB:Q9QYK3}. Cytoplasm. Cytoplasmic vesicle, autophagosome

## Images

---



WB Suggested Anti-Nrbf2 Antibody Titration: 1.0 µg/ml  
Positive Control: Mouse Pancreas

Please note: All products are 'FOR RESEARCH USE ONLY. NOT FOR USE IN DIAGNOSTIC OR THERAPEUTIC PROCEDURES'.