

ZDHHC18 antibody - middle region

Rabbit Polyclonal Antibody
Catalog # AI12139

Product Information

Application	WB
Primary Accession	Q9NUE0
Other Accession	NM_032283 , NP_115659
Reactivity	Human, Mouse, Rat, Rabbit, Pig, Dog, Guinea Pig, Horse, Bovine
Predicted	Human, Mouse, Rat, Rabbit, Pig, Dog, Guinea Pig, Horse, Bovine
Host	Rabbit
Clonality	Polyclonal
Calculated MW	42031

Additional Information

Gene ID	84243
Alias Symbol Other Names	DKFZp667O2416, DHHC18, DHHC-18 Palmitoyltransferase ZDHHC18, 2.3.1.225, Zinc finger DHHC domain-containing protein 18, DHHC-18, ZDHHC18
Format	Liquid. Purified antibody supplied in 1x PBS buffer with 0.09% (w/v) sodium azide and 2% sucrose.
Reconstitution & Storage	Add 50 ul of distilled water. Final anti-ZDHHC18 antibody concentration is 1 mg/ml in PBS buffer with 2% sucrose. For longer periods of storage, store at 20°C. Avoid repeat freeze-thaw cycles.
Precautions	ZDHHC18 antibody - middle region is for research use only and not for use in diagnostic or therapeutic procedures.

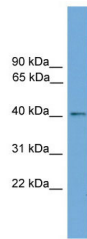
Protein Information

Name	ZDHHC18 {ECO:0000303 PubMed:35438208, ECO:0000312 HGNC:HGNC:20712}
Function	Palmitoyltransferase that catalyzes the addition of palmitate onto various protein substrates, such as CGAS, HRAS and LCK (PubMed: 23034182 , PubMed: 27481942 , PubMed: 35438208). Acts as a negative regulator of the cGAS-STING pathway by mediating palmitoylation and inactivation of CGAS (PubMed: 35438208). May also have a palmitoyltransferase activity toward the beta-2 adrenergic receptor/ADRB2 and therefore regulate G protein-coupled receptor signaling (PubMed: 27481942).
Cellular Location	Golgi apparatus membrane; Multi-pass membrane protein

Tissue Location

Widely expressed..

Images



WB Suggested Anti-ZDHHC18 Antibody Titration: 0.2-1
 $\mu\text{g/ml}$
Positive Control: Hela cell lysate

Please note: All products are 'FOR RESEARCH USE ONLY. NOT FOR USE IN DIAGNOSTIC OR THERAPEUTIC PROCEDURES'.