

# ZGPAT antibody - C-terminal region

Rabbit Polyclonal Antibody

Catalog # AI12140

## Product Information

<b>Application</b>	WB
<b>Primary Accession</b>	<a href="#">Q8N5A5</a>
<b>Other Accession</b>	<a href="#">NM_032527</a> , <a href="#">NP_115916</a>
<b>Reactivity</b>	Human, Mouse, Rat, Rabbit, Dog, Guinea Pig, Horse, Bovine, Sheep
<b>Predicted</b>	Human, Mouse, Rat, Rabbit, Guinea Pig, Horse, Bovine, Sheep
<b>Host</b>	Rabbit
<b>Clonality</b>	Polyclonal
<b>Calculated MW</b>	57359

## Additional Information

<b>Gene ID</b>	84619
<b>Alias Symbol</b>	GPATC6, GPATCH6, KIAA1847, MGC44880, ZC3H9, ZC3HDC9, ZIP, RP4-583P15.3
<b>Other Names</b>	Zinc finger CCCH-type with G patch domain-containing protein, G patch domain-containing protein 6, Zinc finger CCCH domain-containing protein 9, Zinc finger and G patch domain-containing protein, ZGPAT, GPATC6, GPATCH6, KIAA1847, ZC3H9, ZC3HDC9, ZIP
<b>Format</b>	Liquid. Purified antibody supplied in 1x PBS buffer with 0.09% (w/v) sodium azide and 2% sucrose.
<b>Reconstitution &amp; Storage</b>	Add 50 ul of distilled water. Final anti-ZGPAT antibody concentration is 1 mg/ml in PBS buffer with 2% sucrose. For longer periods of storage, store at 20°C. Avoid repeat freeze-thaw cycles.
<b>Precautions</b>	ZGPAT antibody - C-terminal region is for research use only and not for use in diagnostic or therapeutic procedures.

## Protein Information

<b>Name</b>	ZGPAT
<b>Synonyms</b>	GPATC6, GPATCH6, KIAA1847, ZC3H9, ZC3HDC
<b>Function</b>	Transcription repressor that specifically binds the 5'- GGAG[GA]A[GA]A-3' consensus sequence. Represses transcription by recruiting the chromatin multiprotein complex NuRD to target promoters. Negatively regulates expression of EGFR, a gene involved in cell proliferation, survival and migration. Its ability to repress genes of the EGFR pathway suggest it may act

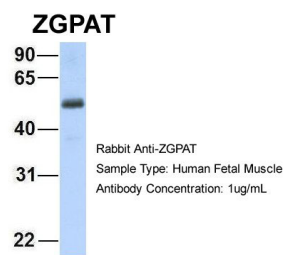
as a tumor suppressor. Able to suppress breast carcinogenesis.

Cellular Location	Nucleus.
Tissue Location	Widely expressed..

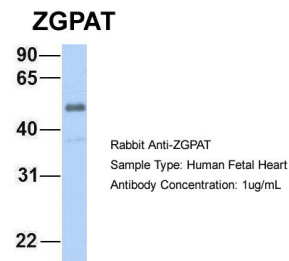
References

Olsen,J.V.,(2006)Cell127(3),635-648ReconstitutionandStorage:Forshorttermuse,storeat2-8Cupto1week.Forlongtermstorage,storeat-20Cinsmallaliquotstopreventfreeze-thawcycles.

Images



Host:Rabbit  
Target Name:ZGPAT  
Sample Tissue:Human Fetal Muscle  
Antibody Dilution: 1.0µg/ml



Host:Rabbit  
Target Name:ZGPAT  
Sample Tissue:Human Fetal Heart  
Antibody Dilution: 1.0µg/ml

Please note: All products are 'FOR RESEARCH USE ONLY. NOT FOR USE IN DIAGNOSTIC OR THERAPEUTIC PROCEDURES'.