

GPR161 antibody - C-terminal region

Rabbit Polyclonal Antibody

Catalog # AI12143

Product Information

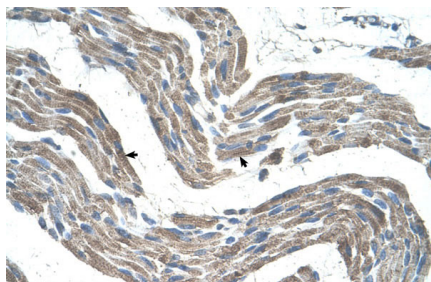
Application	WB, IHC
Primary Accession	Q5TGK2
Other Accession	NM_001267609 , CAI22622
Reactivity	Human, Mouse, Rat, Dog, Guinea Pig, Horse, Bovine
Predicted	Human, Mouse, Pig, Chicken, Dog, Guinea Pig, Horse, Bovine
Host	Rabbit
Clonality	Polyclonal
Calculated MW	44 KDa

Additional Information

Alias Symbol	FLJ33952, RE2
Format	Liquid. Purified antibody supplied in 1x PBS buffer with 0.09% (w/v) sodium azide and 2% sucrose.
Reconstitution & Storage	Add 100 ul of distilled water. Final anti-GPR161 antibody concentration is 1 mg/ml in PBS buffer with 2% sucrose. For longer periods of storage, store at 20°C. Avoid repeat freeze-thaw cycles.
Precautions	GPR161 antibody - C-terminal region is for research use only and not for use in diagnostic or therapeutic procedures.

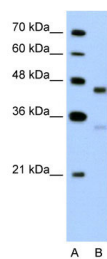
Protein Information

Images



Human Muscle

WB Suggested Anti-GPR161 Antibody Titration: 5.0µg/ml
Positive Control: HepG2 cell lysate



Please note: All products are 'FOR RESEARCH USE ONLY. NOT FOR USE IN DIAGNOSTIC OR THERAPEUTIC PROCEDURES'.