

# MLLT4-AS1 Antibody - C-terminal region

Rabbit Polyclonal Antibody

Catalog # AI12151

## Product Information

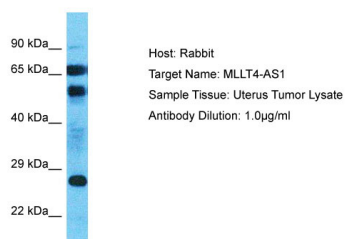
Application	WB
Primary Accession	<a href="#">Q9Y6Z5</a>
Reactivity	Human
Predicted	Human
Host	Rabbit
Clonality	Polyclonal
Calculated MW	27 kDa

## Additional Information

Alias Symbol	MLLT4-AS1, C6orf124,
Other Names	Putative uncharacterized protein MLLT4-AS1, MLLT4 antisense RNA 1, MLLT4 antisense gene protein 1, Protein HGC6.4, MLLT4-AS1, C6orf124
Format	Liquid. Purified antibody supplied in 1x PBS buffer with 0.09% (w/v) sodium azide and 2% sucrose.
Reconstitution & Storage	Add 50 $\mu$ l of distilled water. Final Anti-MLLT4-AS1 antibody concentration is 1 mg/ml in PBS buffer with 2% sucrose. For longer periods of storage, store at -20°C. Avoid repeat freeze-thaw cycles.
Precautions	MLLT4-AS1 Antibody - C-terminal region is for research use only and not for use in diagnostic or therapeutic procedures.

## Protein Information

## Images



Host: Rabbit  
Target Name: MLLT4-AS1  
Sample Tissue: Uterus Tumor lysates  
Antibody Dilution: 1.0 $\mu$ g/ml

Please note: All products are 'FOR RESEARCH USE ONLY. NOT FOR USE IN DIAGNOSTIC OR THERAPEUTIC PROCEDURES'.