

Rapgef2 antibody - middle region

Rabbit Polyclonal Antibody

Catalog # AI12152

Product Information

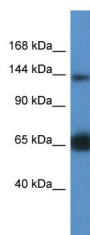
Application	WB
Primary Accession	E9QNO4
Other Accession	NM_001099624 , NP_001093094
Reactivity	Human, Mouse, Rat, Rabbit, Zebrafish, Pig, Dog, Guinea Pig, Horse, Bovine
Predicted	Human, Mouse, Rabbit, Zebrafish, Pig, Chicken, Dog, Guinea Pig, Horse
Host	Rabbit
Clonality	Polyclonal
Calculated MW	150 KDa

Additional Information

Alias Symbol	5830453M24Rik, CNRasGEF, Pdzgef1, RA-GEF-1, mKIAA0313, nRapGEP
Format	Liquid. Purified antibody supplied in 1x PBS buffer with 0.09% (w/v) sodium azide and 2% sucrose.
Reconstitution & Storage	Add 50 ul of distilled water. Final anti-Rapgef2 antibody concentration is 1 mg/ml in PBS buffer with 2% sucrose. For longer periods of storage, store at 20°C. Avoid repeat freeze-thaw cycles.
Precautions	Rapgef2 antibody - middle region is for research use only and not for use in diagnostic or therapeutic procedures.

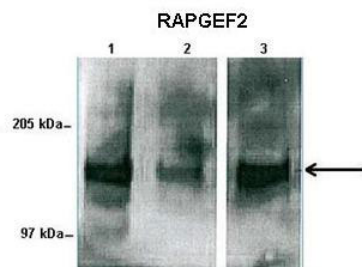
Protein Information

Images



WB Suggested Anti-Rapgef2 Antibody Titration: 1.0 µg/ml
Positive Control: Mouse Kidney

Human sperm and mouse liver



Please note: All products are 'FOR RESEARCH USE ONLY. NOT FOR USE IN DIAGNOSTIC OR THERAPEUTIC PROCEDURES'.