

NR2F1 antibody - N-terminal region

Rabbit Polyclonal Antibody

Catalog # AI12156

Product Information

Application	WB
Primary Accession	P10589
Other Accession	NM_005654 , NP_005645
Reactivity	Human, Mouse, Rat, Zebrafish, Pig, Bovine
Predicted	Human, Mouse, Rat, Pig
Host	Rabbit
Clonality	Polyclonal
Calculated MW	46156

Additional Information

Gene ID	7025
Alias Symbol Other Names	COUP-TFI, EAR-3, EAR3, ERBAL3, NR2F2, SVP44, TCFCOUP1, TFCOUP1 COUP transcription factor 1, COUP-TF1, COUP transcription factor I, COUP-TF I, Nuclear receptor subfamily 2 group F member 1, V-erbA-related protein 3, EAR-3, NR2F1, EAR3, ERBAL3, TFCOUP1
Format	Liquid. Purified antibody supplied in 1x PBS buffer with 0.09% (w/v) sodium azide and 2% sucrose.
Reconstitution & Storage	Add 50 ul of distilled water. Final anti-NR2F1 antibody concentration is 1 mg/ml in PBS buffer with 2% sucrose. For longer periods of storage, store at 20°C. Avoid repeat freeze-thaw cycles.
Precautions	NR2F1 antibody - N-terminal region is for research use only and not for use in diagnostic or therapeutic procedures.

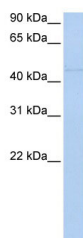
Protein Information

Name	NR2F1
Synonyms	EAR3, ERBAL3, TFCOUP1
Function	Coup (chicken ovalbumin upstream promoter) transcription factor binds to the ovalbumin promoter and, in conjunction with another protein (S300-II) stimulates initiation of transcription. Binds to both direct repeats and palindromes of the 5'-AGGTCA-3' motif. Represses transcriptional activity of LHCG.
Cellular Location	Nucleus.

References

Schafer, G., (2008) Cancer Res. 68(2), 457-466 Reconstitution and Storage: For short term use, store at 2-8°C up to 1 week. For long term storage, store at -20°C in small aliquots to prevent freeze-thaw cycles.

Images



WB Suggested Anti-NR2F1 Antibody Titration: 0.2-1 µg/ml
ELISA Titer: 1:62500
Positive Control: Transfected 293T

Please note: All products are 'FOR RESEARCH USE ONLY. NOT FOR USE IN DIAGNOSTIC OR THERAPEUTIC PROCEDURES'.