

Gjb3 antibody - N-terminal region

Rabbit Polyclonal Antibody

Catalog # AI12162

Product Information

Application	WB
Primary Accession	P28231
Other Accession	NM_008126 , NP_032152
Reactivity	Human, Mouse, Rat, Rabbit, Zebrafish, Pig, Dog, Horse, Bovine
Predicted	Human, Mouse, Dog
Host	Rabbit
Clonality	Polyclonal
Calculated MW	30902

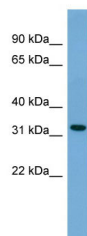
Additional Information

Gene ID	14620
Alias Symbol	Cnx31, Cx31, D4Wsu144e, Gjb-3
Other Names	Gap junction beta-3 protein, Connexin-31, Cx31, Gjb3, Cxn-31
Format	Liquid. Purified antibody supplied in 1x PBS buffer with 0.09% (w/v) sodium azide and 2% sucrose.
Reconstitution & Storage	Add 50 ul of distilled water. Final anti-Gjb3 antibody concentration is 1 mg/ml in PBS buffer with 2% sucrose. For longer periods of storage, store at 20°C. Avoid repeat freeze-thaw cycles.
Precautions	Gjb3 antibody - N-terminal region is for research use only and not for use in diagnostic or therapeutic procedures.

Protein Information

Name	Gjb3
Synonyms	Cxn-31
Function	One gap junction consists of a cluster of closely packed pairs of transmembrane channels, the connexons, through which materials of low MW diffuse from one cell to a neighboring cell.
Cellular Location	Cell membrane; Multi-pass membrane protein. Cell junction, gap junction

Images



WB Suggested Anti-Gjb3 Antibody Titration: 0.125µg/ml
ELISA Titer: 1:1562500
Positive Control: SP2/0 cell lysate

Please note: All products are 'FOR RESEARCH USE ONLY. NOT FOR USE IN DIAGNOSTIC OR THERAPEUTIC PROCEDURES'.