

Gja10 antibody - N-terminal region

Rabbit Polyclonal Antibody

Catalog # AI12166

Product Information

Application	WB
Primary Accession	Q9WUS4
Other Accession	NM_010289 , NP_034419
Reactivity	Human, Mouse, Rat, Rabbit, Zebrafish, Pig, Dog, Horse, Bovine
Predicted	Rat, Pig, Chicken, Dog, Bovine
Host	Rabbit
Clonality	Polyclonal
Calculated MW	57127

Additional Information

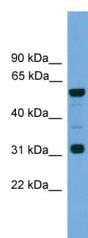
Alias Symbol	Cx-57, Cx59
Other Names	Gap junction alpha-10 protein, Connexin-57, Cx57, Gja10
Format	Liquid. Purified antibody supplied in 1x PBS buffer with 0.09% (w/v) sodium azide and 2% sucrose.
Reconstitution & Storage	Add 50 ul of distilled water. Final anti-Gja10 antibody concentration is 1 mg/ml in PBS buffer with 2% sucrose. For longer periods of storage, store at 20°C. Avoid repeat freeze-thaw cycles.
Precautions	Gja10 antibody - N-terminal region is for research use only and not for use in diagnostic or therapeutic procedures.

Protein Information

Name	Gja10
Function	One gap junction consists of a cluster of closely packed pairs of transmembrane channels, the connexons, through which materials of low MW diffuse from one cell to a neighboring cell. Involved in tracer coupling between horizontal cells of the retina. May play a role in the regulation of horizontal cell patterning.
Cellular Location	Cell membrane; Multi-pass membrane protein. Cell junction, gap junction
Tissue Location	Low levels were detected in skin, heart, kidney, testis, ovary, intestine. Expression not detected in brain, sciatic nerve or liver. According to PubMed:15147297 expression is detected only in horizontal cells in the inner nuclear layer of the retina and not in other neurons of the central nervous system or tissues. Detected in the outer plexiform layer of the retina (at

protein level)

Images



WB Suggested Anti-Gja10 Antibody Titration: 0.2-1 μ g/ml
Positive Control: Mouse Heart

Please note: All products are 'FOR RESEARCH USE ONLY. NOT FOR USE IN DIAGNOSTIC OR THERAPEUTIC PROCEDURES'.