

# Anxa13 antibody - middle region

Rabbit Polyclonal Antibody

Catalog # AI12170

## Product Information

---

<b>Application</b>	WB
<b>Primary Accession</b>	<a href="#">Q99JG3</a>
<b>Other Accession</b>	<a href="#">NM_027211</a> , <a href="#">NP_081487</a>
<b>Reactivity</b>	Human, Mouse, Rat, Rabbit, Zebrafish, Pig, Dog, Guinea Pig, Horse, Bovine, Sheep
<b>Predicted Host</b>	Human, Rat, Pig, Chicken, Guinea Pig, Bovine
<b>Clonality</b>	Rabbit
<b>Calculated MW</b>	Polyclonal 35922

## Additional Information

---

<b>Gene ID</b>	69787
<b>Alias Symbol</b>	1810034H17Rik, AV055219
<b>Other Names</b>	Annexin A13, Annexin XIII, Annexin-13, Anxa13
<b>Format</b>	Liquid. Purified antibody supplied in 1x PBS buffer with 0.09% (w/v) sodium azide and 2% sucrose.
<b>Reconstitution &amp; Storage</b>	Add 50 ul of distilled water. Final anti-Anxa13 antibody concentration is 1 mg/ml in PBS buffer with 2% sucrose. For longer periods of storage, store at 20°C. Avoid repeat freeze-thaw cycles.
<b>Precautions</b>	Anxa13 antibody - middle region is for research use only and not for use in diagnostic or therapeutic procedures.

## Protein Information

---

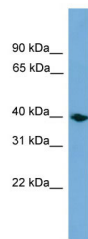
<b>Name</b>	Anxa13
<b>Function</b>	Binds to membranes enriched in phosphatidylserine or phosphatidylglycerol in a calcium-dependent manner. Half-maximal membrane binding requires about 60 uM calcium. Does not bind to membranes that lack phospholipids with an acidic headgroup.
<b>Cellular Location</b>	Apical cell membrane. Cell membrane {ECO:0000250 UniProtKB:P27216}; Lipid-anchor {ECO:0000250 UniProtKB:P27216}. Cytoplasmic vesicle. Note=Myristoylation anchors the protein to the membrane, but the protein also displays calcium-dependent, reversible binding to lipid membranes. {ECO:0000250 UniProtKB:P27216}

**Tissue Location**

Detected on the tips of microvilli in small intestine (at protein level).

**Images**

---



WB Suggested Anti-Anxa13 Antibody Titration: 0.2-1  
µg/ml  
ELISA Titer: 1:62500  
Positive Control: Mouse Muscle

Please note: All products are 'FOR RESEARCH USE ONLY. NOT FOR USE IN DIAGNOSTIC OR THERAPEUTIC PROCEDURES'.