

Anxa13 Antibody - C-terminal region

Rabbit Polyclonal Antibody

Catalog # AI12171

Product Information

Application	WB
Primary Accession	Q99JG3
Other Accession	NM_027211 , NP_081487
Reactivity	Human, Mouse, Rat, Rabbit, Dog, Guinea Pig, Horse, Bovine
Predicted	Human, Mouse, Rat, Rabbit, Pig, Dog, Guinea Pig, Horse, Bovine
Host	Rabbit
Clonality	Polyclonal
Calculated MW	35922

Additional Information

Gene ID	69787
Alias Symbol	1810034H17Rik, AV055219
Other Names	Annexin A13, Annexin XIII, Annexin-13, Anxa13
Format	Liquid. Purified antibody supplied in 1x PBS buffer with 0.09% (w/v) sodium azide and 2% sucrose.
Reconstitution & Storage	Add 50 ul of distilled water. Final anti-Anxa13 antibody concentration is 1 mg/ml in PBS buffer with 2% sucrose. For longer periods of storage, store at 20°C. Avoid repeat freeze-thaw cycles.
Precautions	Anxa13 Antibody - C-terminal region is for research use only and not for use in diagnostic or therapeutic procedures.

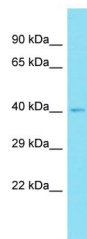
Protein Information

Name	Anxa13
Function	Binds to membranes enriched in phosphatidylserine or phosphatidylglycerol in a calcium-dependent manner. Half-maximal membrane binding requires about 60 uM calcium. Does not bind to membranes that lack phospholipids with an acidic headgroup.
Cellular Location	Apical cell membrane. Cell membrane {ECO:0000250 UniProtKB:P27216}; Lipid-anchor {ECO:0000250 UniProtKB:P27216}. Cytoplasmic vesicle. Note=Myristoylation anchors the protein to the membrane, but the protein also displays calcium-dependent, reversible binding to lipid membranes. {ECO:0000250 UniProtKB:P27216}

Tissue Location

Detected on the tips of microvilli in small intestine (at protein level).

Images



Host: Rabbit
Target Name: Anxa13
Sample Tissue: Mouse Spleen lysates
Antibody Dilution: 1.0µg/ml

Please note: All products are 'FOR RESEARCH USE ONLY. NOT FOR USE IN DIAGNOSTIC OR THERAPEUTIC PROCEDURES'.