

Klf7 Antibody - middle region

Rabbit Polyclonal Antibody

Catalog # AI12172

Product Information

Application	WB
Primary Accession	Q99JB0
Other Accession	NM_033563 , NP_291041
Reactivity	Human, Mouse, Rat, Rabbit, Zebrafish, Pig, Dog, Guinea Pig, Horse, Bovine
Predicted	Human, Mouse, Rat, Rabbit, Zebrafish, Pig, Dog, Guinea Pig, Horse, Bovine
Host	Rabbit
Clonality	Polyclonal
Calculated MW	33337

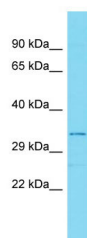
Additional Information

Gene ID	93691
Alias Symbol	9830124P08Rik
Other Names	Krueppel-like factor 7, Klf7
Format	Liquid. Purified antibody supplied in 1x PBS buffer with 0.09% (w/v) sodium azide and 2% sucrose.
Reconstitution & Storage	Add 50 ul of distilled water. Final anti-Klf7 antibody concentration is 1 mg/ml in PBS buffer with 2% sucrose. For longer periods of storage, store at 20°C. Avoid repeat freeze-thaw cycles.
Precautions	Klf7 Antibody - middle region is for research use only and not for use in diagnostic or therapeutic procedures.

Protein Information

Name	Klf7
Function	Transcriptional factor (PubMed: 11245580). Plays a critical role in neuronal morphogenesis (PubMed: 11336497 , PubMed: 15964824). Represses the corneal epithelium differentiation (By similarity). Acts also as a metabolic regulator, by modulating insulin sensitivity in pancreatic beta cells and skeletal muscle cells. Inhibits transcriptional inducers of adipogenesis and has a repressive role in the expression of several adipokines, including leptin (By similarity).
Cellular Location	Nucleus {ECO:0000250 UniProtKB:O75840}.
Tissue Location	Widely expressed (PubMed:11336497). Detected in the cornea epithelium (at

Images



Host: Rabbit
Target Name: Klf7
Sample Tissue: Mouse Testis lysates
Antibody Dilution: 1.0µg/ml

Please note: All products are 'FOR RESEARCH USE ONLY. NOT FOR USE IN DIAGNOSTIC OR THERAPEUTIC PROCEDURES'.