

Parp8 antibody - N-terminal region

Rabbit Polyclonal Antibody

Catalog # AI12175

Product Information

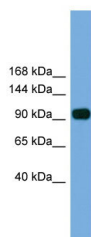
Application	WB
Primary Accession	Q3UD82.1
Other Accession	NM_001081009 , NP_001074478
Reactivity	Human, Mouse, Rat, Rabbit, Zebrafish, Pig, Dog, Guinea Pig, Horse, Bovine
Predicted	Human, Mouse, Rabbit, Pig, Dog, Guinea Pig, Horse, Bovine
Host	Rabbit
Clonality	Polyclonal
Calculated MW	99 kDa

Additional Information

Alias Symbol	2810430008Rik, D13Ertd275e
Format	Liquid. Purified antibody supplied in 1x PBS buffer with 0.09% (w/v) sodium azide and 2% sucrose.
Reconstitution & Storage	Add 50 ul of distilled water. Final anti-Parp8 antibody concentration is 1 mg/ml in PBS buffer with 2% sucrose. For longer periods of storage, store at 20°C. Avoid repeat freeze-thaw cycles.
Precautions	Parp8 antibody - N-terminal region is for research use only and not for use in diagnostic or therapeutic procedures.

Protein Information

Images



WB Suggested Anti-Parp8 Antibody Titration: 0.2-1 µg/ml
ELISA Titer: 1:62500
Positive Control: Mouse Kidney