

MPDZ antibody - middle region

Rabbit Polyclonal Antibody

Catalog # AI12182

Product Information

Application	WB, IHC
Primary Accession	O75970
Other Accession	NM_003829 , NP_003820
Reactivity	Human, Mouse, Rat, Rabbit, Dog, Guinea Pig, Horse, Bovine
Predicted	Human, Mouse, Rat, Rabbit, Pig, Chicken, Dog, Guinea Pig, Horse, Bovine
Host	Rabbit
Clonality	Polyclonal
Calculated MW	221618

Additional Information

Gene ID	8777
Alias Symbol	DKFZp781P216, FLJ25909, FLJ34626, FLJ90240, MUPP1
Other Names	Multiple PDZ domain protein, Multi-PDZ domain protein 1, MPDZ, MUPP1
Format	Liquid. Purified antibody supplied in 1x PBS buffer with 0.09% (w/v) sodium azide and 2% sucrose.
Reconstitution & Storage	Add 50 ul of distilled water. Final anti-MPDZ antibody concentration is 1 mg/ml in PBS buffer with 2% sucrose. For longer periods of storage, store at 20°C. Avoid repeat freeze-thaw cycles.
Precautions	MPDZ antibody - middle region is for research use only and not for use in diagnostic or therapeutic procedures.

Protein Information

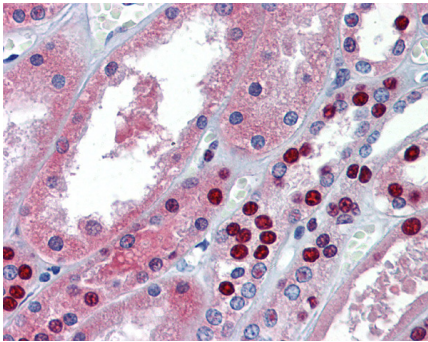
Name	MPDZ
Synonyms	MUPP1
Function	Member of the NMDAR signaling complex that may play a role in control of AMPAR potentiation and synaptic plasticity in excitatory synapses (PubMed: 11150294 , PubMed: 15312654). Promotes clustering of HT2RC at the cell surface (By similarity).
Cellular Location	Cell membrane; Peripheral membrane protein; Cytoplasmic side. Apical cell membrane; Peripheral membrane protein; Cytoplasmic side. Postsynaptic density. Cell projection, dendrite. Cell junction, tight junction. Synapse. Synapse, synaptosome Note=Colocalizes with HTR2C on the apical membrane

of epithelial choroid plexus cells (By similarity). Highly enriched in postsynaptic densities (PSD). Localized to punctae on dendrites of hippocampal neurons and colocalizes with the synaptic marker DLG4. Localized mainly in the Schmidt-Lanterman incisures of myelinating Schwann cells (By similarity). In the retina, localizes to the sub-apical region adjacent to the adherens junction complex at the outer limiting membrane Enriched at the tight junctions of epithelial cells. Association to the tight junctions depends on CXADR. {ECO:0000250, ECO:0000250|UniProtKB:O55164}

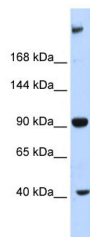
Tissue Location

Expressed in heart, brain, placenta, liver, skeletal muscle, kidney and pancreas.

Images



Kidney



WB Suggested Anti-MPDZ Antibody Titration: 0.2-1 µg/ml
ELISA Titer: 1:312500
Positive Control: Human Liver

Please note: All products are 'FOR RESEARCH USE ONLY. NOT FOR USE IN DIAGNOSTIC OR THERAPEUTIC PROCEDURES'.