

# Pard6b Antibody - N-terminal region

Rabbit Polyclonal Antibody

Catalog # AI12186

## Product Information

---

<b>Application</b>	WB
<b>Primary Accession</b>	<a href="#">Q9JK83</a>
<b>Other Accession</b>	<a href="#">NM_021409</a> , <a href="#">NP_067384</a>
<b>Reactivity</b>	Human, Mouse, Rat, Rabbit, Zebrafish, Dog, Guinea Pig, Horse, Bovine
<b>Predicted</b>	Human, Mouse, Rat, Rabbit, Zebrafish, Pig, Dog, Guinea Pig, Horse, Bovine
<b>Host</b>	Rabbit
<b>Clonality</b>	Polyclonal
<b>Calculated MW</b>	41067

## Additional Information

---

<b>Gene ID</b>	58220
<b>Alias Symbol</b>	AV025615, Par6b
<b>Other Names</b>	Partitioning defective 6 homolog beta, PAR-6 beta, PAR-6B, Pard6b, Par6b
<b>Format</b>	Liquid. Purified antibody supplied in 1x PBS buffer with 0.09% (w/v) sodium azide and 2% sucrose.
<b>Reconstitution &amp; Storage</b>	Add 50 µl of distilled water. Final Anti-Pard6b antibody concentration is 1 mg/ml in PBS buffer with 2% sucrose. For longer periods of storage, store at -20°C. Avoid repeat freeze-thaw cycles.
<b>Precautions</b>	Pard6b Antibody - N-terminal region is for research use only and not for use in diagnostic or therapeutic procedures.

## Protein Information

---

<b>Name</b>	Pard6b
<b>Synonyms</b>	Par6b
<b>Function</b>	Adapter protein involved in asymmetrical cell division and cell polarization processes. Probably involved in formation of epithelial tight junctions. Association with PARD3 may prevent the interaction of PARD3 with F11R/JAM1, thereby preventing tight junction assembly. The PARD6-PARD3 complex links GTP-bound Rho small GTPases to atypical protein kinase C proteins.
<b>Cellular Location</b>	Cytoplasm. Cell membrane. Cell junction, tight junction. Note=Colocalizes with active form of CDC42 or RAC1 at membrane ruffles. Also localizes to tight

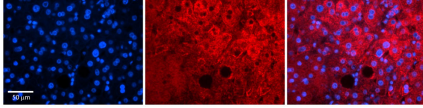
junctions

## Tissue Location

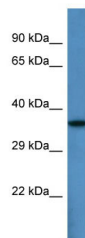
Expressed in pancreas and in both adult and fetal kidney. Weakly expressed in placenta and lung. Not expressed in other tissues

## Images

---



Rabbit Anti-Pard6b Antibody  
Formalin Fixed Paraffin Embedded Tissue: Human Adult liver  
Observed Staining: Cytoplasmic,Membrane  
Primary Antibody  
Concentration: 1:600  
Secondary Antibody: Donkey anti-Rabbit-Cy2/3  
Secondary Antibody  
Concentration: 1:200  
Magnification: 20X  
Exposure Time: 0.5 2.0 sec  
Protocol located in Reviews and Data.



Host: Rabbit  
Target Name: Pard6b  
Sample Tissue: Mouse Heart lysates  
Antibody Dilution: 1.0µg/ml

Please note: All products are 'FOR RESEARCH USE ONLY. NOT FOR USE IN DIAGNOSTIC OR THERAPEUTIC PROCEDURES'.