

UBE2D1 antibody - middle region

Rabbit Polyclonal Antibody

Catalog # AI12203

Product Information

Application	WB
Primary Accession	P51668
Other Accession	NM_001204880 , NP_003329
Reactivity	Human, Mouse, Rat, Rabbit, Zebrafish, Pig, Goat, Dog, Guinea Pig, Horse, Bovine
Predicted Host	Mouse, Zebrafish, Pig, Chicken, Goat, Dog
Clonality	Rabbit
Calculated MW	Polyclonal 16602

Additional Information

Gene ID	7321
Alias Symbol Other Names	E2(17)KB1, SFT, UBC4/5, UBCH5, UBCH5A Ubiquitin-conjugating enzyme E2 D1, 6.3.2.19, Stimulator of Fe transport, SFT, UBC4/5 homolog, Ubch5, Ubiquitin carrier protein D1, Ubiquitin-conjugating enzyme E2(17)KB 1, Ubiquitin-conjugating enzyme E2-17 kDa 1, Ubiquitin-protein ligase D1, UBE2D1, SFT, UBC5A, UBCH5, UBCH5A
Format	Liquid. Purified antibody supplied in 1x PBS buffer with 0.09% (w/v) sodium azide and 2% sucrose.
Reconstitution & Storage	Add 100 ul of distilled water. Final anti-UBE2D1 antibody concentration is 1 mg/ml in PBS buffer with 2% sucrose. For longer periods of storage, store at 20°C. Avoid repeat freeze-thaw cycles.
Precautions	UBE2D1 antibody - middle region is for research use only and not for use in diagnostic or therapeutic procedures.

Protein Information

Name	UBE2D1
Synonyms	SFT, UBC5A, UBCH5, UBCH5A
Function	Accepts ubiquitin from the E1 complex and catalyzes its covalent attachment to other proteins (PubMed: 22496338). In vitro catalyzes 'Lys-48'-linked polyubiquitination (PubMed: 20061386). Mediates the selective degradation of short-lived and abnormal proteins. Functions in the E6/E6-AP-induced ubiquitination of p53/TP53. Mediates ubiquitination of PEX5 and

auto-ubiquitination of STUB1, TRAF6 and TRIM63/MURF1 (PubMed:[18042044](#), PubMed:[18359941](#)). Ubiquitinates STUB1-associated HSP90AB1 in vitro (PubMed:[18042044](#)). Lacks inherent specificity for any particular lysine residue of ubiquitin (PubMed:[18042044](#)). Essential for viral activation of IRF3 (PubMed:[19854139](#)). Mediates polyubiquitination of CYP3A4 (PubMed:[19103148](#)).

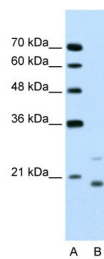
Cellular Location

Cytoplasm.

Tissue Location

Ubiquitous. Up-regulated in livers of iron- overloaded patients with hereditary hemochromatosis

Images



WB Suggested Anti-UBE2D1 Antibody Titration: 1.25µg/ml
Positive Control: Jurkat cell lysate

Please note: All products are 'FOR RESEARCH USE ONLY. NOT FOR USE IN DIAGNOSTIC OR THERAPEUTIC PROCEDURES'.