

# Ube2h Antibody - N-terminal region

Rabbit Polyclonal Antibody

Catalog # AI12206

## Product Information

<b>Application</b>	WB
<b>Primary Accession</b>	<a href="#">P62257</a>
<b>Other Accession</b>	<a href="#">NM_009459</a> , <a href="#">NP_033485</a>
<b>Reactivity</b>	Human, Mouse, Rat, Rabbit, Zebrafish, Pig, Goat, Dog, Guinea Pig, Horse, Bovine, Yeast
<b>Predicted</b>	Human, Mouse, Rat, Rabbit, Zebrafish, Pig, Goat, Dog, Guinea Pig, Horse, Bovine, Yeast
<b>Host</b>	Rabbit
<b>Clonality</b>	Polyclonal
<b>Calculated MW</b>	20655

## Additional Information

<b>Gene ID</b>	22214
<b>Alias Symbol</b>	1500009C23Rik, AI181839, AI326965, AI462483, AW227540, E2-20K, N28148, Ubc8
<b>Other Names</b>	Ubiquitin-conjugating enzyme E2 H, 6.3.2.19, UBCH2, Ubiquitin carrier protein H, Ubiquitin-conjugating enzyme E2-20K, Ubiquitin-protein ligase H, Ube2h
<b>Format</b>	Liquid. Purified antibody supplied in 1x PBS buffer with 0.09% (w/v) sodium azide and 2% sucrose.
<b>Reconstitution &amp; Storage</b>	Add 50 ul of distilled water. Final anti-Ube2h antibody concentration is 1 mg/ml in PBS buffer with 2% sucrose. For longer periods of storage, store at 20°C. Avoid repeat freeze-thaw cycles.
<b>Precautions</b>	Ube2h Antibody - N-terminal region is for research use only and not for use in diagnostic or therapeutic procedures.

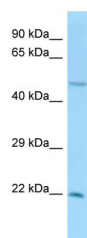
## Protein Information

<b>Name</b>	Ube2h
<b>Function</b>	Accepts ubiquitin from the E1 complex and catalyzes its covalent attachment to other proteins. E2 ubiquitin conjugating enzyme that transfers ubiquitin to MAEA, a core component of the CTLH E3 ubiquitin-protein ligase complex. In vitro catalyzes 'Lys-11'- and 'Lys-48'-linked polyubiquitination. Capable, in vitro, to ubiquitinate histone H2A.
<b>Tissue Location</b>	Detected in reticulocytes, lung, brain and skeletal muscle (at protein level) (PubMed:7761435). Ubiquitous. Detected in cardiac muscle, brain, spleen,

lung, liver, skeletal muscle, kidney and mso testis (PubMed:7590289).

## Images

---



Host: Rabbit  
Target Name: Ube2h  
Sample Tissue: Mouse Testis lysates  
Antibody Dilution: 1.0µg/ml

Please note: All products are 'FOR RESEARCH USE ONLY. NOT FOR USE IN DIAGNOSTIC OR THERAPEUTIC PROCEDURES'.