

RBBP6 antibody - N-terminal region

Rabbit Polyclonal Antibody

Catalog # AI12215

Product Information

Application	WB
Primary Accession	Q7Z6E9
Other Accession	NM_006910 , NP_008841
Reactivity	Human, Mouse, Rat, Rabbit, Pig, Dog, Bovine
Predicted	Human, Mouse, Rat, Rabbit, Pig, Dog, Bovine
Host	Rabbit
Clonality	Polyclonal
Calculated MW	201564

Additional Information

Gene ID	5930
Alias Symbol Other Names	DKFZp686P0638, DKFZp761B2423, MY038, P2P-R, RBQ-1, PACT, SNAMA E3 ubiquitin-protein ligase RBBP6, 6.3.2.-, Proliferation potential-related protein, Protein P2P-R, Retinoblastoma-binding Q protein 1, RBQ-1, Retinoblastoma-binding protein 6, p53-associated cellular protein of testis, RBBP6, P2PR, PACT, RBQ1
Format	Liquid. Purified antibody supplied in 1x PBS buffer with 0.09% (w/v) sodium azide and 2% sucrose.
Reconstitution & Storage	Add 50 ul of distilled water. Final anti-RBBP6 antibody concentration is 1 mg/ml in PBS buffer with 2% sucrose. For longer periods of storage, store at 20°C. Avoid repeat freeze-thaw cycles.
Precautions	RBBP6 antibody - N-terminal region is for research use only and not for use in diagnostic or therapeutic procedures.

Protein Information

Name	RBBP6
Synonyms	P2PR, PACT, RBQ1
Function	E3 ubiquitin-protein ligase which promotes ubiquitination of YBX1, leading to its degradation by the proteasome (PubMed: 18851979). May play a role as a scaffold protein to promote the assembly of the p53/TP53-MDM2 complex, resulting in increase of MDM2-mediated ubiquitination and degradation of p53/TP53; may function as negative regulator of p53/TP53, leading to both apoptosis and cell growth (By similarity). Regulates DNA-replication and the

stability of chromosomal common fragile sites (CFSs) in a ZBTB38- and MCM10-dependent manner. Controls ZBTB38 protein stability and abundance via ubiquitination and proteasomal degradation, and ZBTB38 in turn negatively regulates the expression of MCM10 which plays an important role in DNA-replication (PubMed:[24726359](#)).

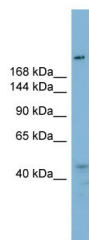
Cellular Location

Nucleus, nucleolus. Chromosome. Cytoplasm, cytoskeleton, microtubule organizing center, centrosome Note=Colocalizes with mitotic chromosomes. Colocalizes with NEK6 in the centrosome

Tissue Location

Highly expressed in the placenta and testis. Expressed at lower levels in the brain, heart, kidney, liver and lung Overexpressed in esophageal cancer.

Images



WB Suggested Anti-RBBP6 Antibody Titration: 0.2-1 µg/ml
Positive Control: NCI-H226 cell lysate

Please note: All products are 'FOR RESEARCH USE ONLY. NOT FOR USE IN DIAGNOSTIC OR THERAPEUTIC PROCEDURES'.