

FBXL3 antibody - middle region

Rabbit Polyclonal Antibody

Catalog # AI12217

Product Information

Application	WB
Primary Accession	Q9UKT7
Other Accession	NM_012158 , NP_036290
Reactivity	Human, Mouse, Rat, Rabbit, Zebrafish, Pig, Dog, Guinea Pig, Horse, Bovine, Sheep, Yeast
Predicted	Human, Mouse, Rat, Rabbit, Zebrafish, Pig, Chicken, Dog, Guinea Pig, Horse, Bovine, Sheep
Host	Rabbit
Clonality	Polyclonal
Calculated MW	48707

Additional Information

Gene ID	26224
Alias Symbol	FBL3, FBL3A, FBXL3A
Other Names	F-box/LRR-repeat protein 3, F-box and leucine-rich repeat protein 3A, F-box/LRR-repeat protein 3A, FBXL3, FBL3A, FBXL3A
Format	Liquid. Purified antibody supplied in 1x PBS buffer with 0.09% (w/v) sodium azide and 2% sucrose.
Reconstitution & Storage	Add 50 ul of distilled water. Final anti-FBXL3 antibody concentration is 1 mg/ml in PBS buffer with 2% sucrose. For longer periods of storage, store at 20°C. Avoid repeat freeze-thaw cycles.
Precautions	FBXL3 antibody - middle region is for research use only and not for use in diagnostic or therapeutic procedures.

Protein Information

Name	FBXL3
Synonyms	FBL3A, FBXL3A
Function	Substrate-recognition component of the SCF(FBXL3) E3 ubiquitin ligase complex involved in circadian rhythm function. Plays a key role in the maintenance of both the speed and the robustness of the circadian clock oscillation (PubMed: 17463251 , PubMed: 23452855 , PubMed: 27565346). The SCF(FBXL3) complex mainly acts in the nucleus and mediates ubiquitination and subsequent degradation of CRY1 and CRY2 (PubMed: 17463251 , PubMed: 23452855 , PubMed: 27565346). Activity of the SCF(FBXL3) complex is

counteracted by the SCF(FBXL21) complex (PubMed:[23452855](#)).

Cellular Location

Nucleus. Cytoplasm. Note=Predominantly nuclear

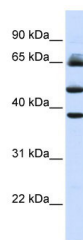
Tissue Location

Widely expressed..

References

Busino,L.,(2007)Science316(5826),900-904ReconstitutionandStorage:Forshorttermuse,storeat2-8Cupto1week
.Forlongtermstorage,storeat-20Cinsmallaliquotstopreventfreeze-thawcycles.

Images



WB Suggested Anti-FBXL3 Antibody Titration: 0.2-1 µg/ml
ELISA Titer: 1:312500
Positive Control: Human Liver

Please note: All products are 'FOR RESEARCH USE ONLY. NOT FOR USE IN DIAGNOSTIC OR THERAPEUTIC PROCEDURES'.