

FBXO25 antibody - N-terminal region

Rabbit Polyclonal Antibody

Catalog # AI12222

Product Information

Application	WB
Primary Accession	Q8TCJ0
Other Accession	NM_012173 , NP_036305
Reactivity	Human, Mouse, Rat, Rabbit, Zebrafish, Pig, Dog, Guinea Pig, Horse, Bovine
Predicted	Human, Mouse, Rabbit, Zebrafish, Chicken, Dog, Guinea Pig, Horse
Host	Rabbit
Clonality	Polyclonal
Calculated MW	43313

Additional Information

Gene ID	26260
Alias Symbol	FBX25, MGC20256, MGC51975
Other Names	F-box only protein 25, FBXO25, FBX25
Format	Liquid. Purified antibody supplied in 1x PBS buffer with 0.09% (w/v) sodium azide and 2% sucrose.
Reconstitution & Storage	Add 50 ul of distilled water. Final anti-FBXO25 antibody concentration is 1 mg/ml in PBS buffer with 2% sucrose. For longer periods of storage, store at 20°C. Avoid repeat freeze-thaw cycles.
Precautions	FBXO25 antibody - N-terminal region is for research use only and not for use in diagnostic or therapeutic procedures.

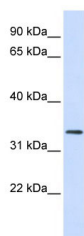
Protein Information

Name	FBXO25
Synonyms	FBX25
Function	Substrate-recognition component of the SCF (SKP1-CUL1-F-box protein)-type E3 ubiquitin ligase complex. May play a role in accumulation of expanded polyglutamine (polyQ) protein huntingtin (HTT) (By similarity).
Cellular Location	Nucleus. Note=In the nucleus, associates with a subnuclear dot-like structure. Colocalized with SKP1
Tissue Location	Expressed in all brain tissue observed.

References

Hagens, O., (2006) Biochim. Biophys. Acta 1760(1), 110-118 Reconstitution and Storage: For short term use, store at 2-8°C up to 1 week. For long term storage, store at -20°C in small aliquots to prevent freeze-thaw cycles.

Images



WB Suggested Anti-FBXO25 Antibody Titration: 0.2-1
µg/ml
ELISA Titer: 1:312500
Positive Control: Human heart

Please note: All products are 'FOR RESEARCH USE ONLY. NOT FOR USE IN DIAGNOSTIC OR THERAPEUTIC PROCEDURES'.