

# HERC6 antibody - N-terminal region

Rabbit Polyclonal Antibody

Catalog # AI12243

## Product Information

---

<b>Application</b>	WB
<b>Primary Accession</b>	<a href="#">Q8IVU3</a>
<b>Other Accession</b>	<a href="#">NM_017912</a> , <a href="#">NP_060382</a>
<b>Reactivity</b>	Human, Mouse, Rat, Rabbit, Pig, Dog, Guinea Pig, Horse, Bovine
<b>Predicted</b>	Human, Rabbit, Dog, Guinea Pig, Horse, Bovine
<b>Host</b>	Rabbit
<b>Clonality</b>	Polyclonal
<b>Calculated MW</b>	115126

## Additional Information

---

<b>Gene ID</b>	55008
<b>Alias Symbol</b>	FLJ20637
<b>Other Names</b>	Probable E3 ubiquitin-protein ligase HERC6, 6.3.2.-, HECT domain and RCC1-like domain-containing protein 6, HERC6
<b>Format</b>	Liquid. Purified antibody supplied in 1x PBS buffer with 0.09% (w/v) sodium azide and 2% sucrose.
<b>Reconstitution &amp; Storage</b>	Add 50 ul of distilled water. Final anti-HERC6 antibody concentration is 1 mg/ml in PBS buffer with 2% sucrose. For longer periods of storage, store at 20°C. Avoid repeat freeze-thaw cycles.
<b>Precautions</b>	HERC6 antibody - N-terminal region is for research use only and not for use in diagnostic or therapeutic procedures.

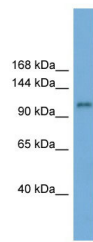
## Protein Information

---

<b>Name</b>	HERC6
<b>Function</b>	E3 ubiquitin-protein ligase which accepts ubiquitin from an E2 ubiquitin-conjugating enzyme in the form of a thioester and then directly transfers the ubiquitin to targeted substrates.
<b>Cellular Location</b>	Cytoplasm, cytosol.
<b>Tissue Location</b>	Detected in brain, heart, placenta and testis.

## Images

---



WB Suggested Anti-HERC6 Antibody Titration: 0.2-1  $\mu$ g/ml  
Positive Control: ACHN cell lysate

Please note: All products are 'FOR RESEARCH USE ONLY. NOT FOR USE IN DIAGNOSTIC OR THERAPEUTIC PROCEDURES'.