

# C14orf130 antibody - middle region

Rabbit Polyclonal Antibody

Catalog # AI12245

## Product Information

---

<b>Application</b>	WB, IHC
<b>Primary Accession</b>	<a href="#">Q8N806</a>
<b>Other Accession</b>	<a href="#">NM_175748</a> , <a href="#">NP_786924</a>
<b>Reactivity</b>	Human, Mouse, Rat, Rabbit, Pig, Dog, Guinea Pig, Horse, Bovine
<b>Predicted</b>	Chicken
<b>Host</b>	Rabbit
<b>Clonality</b>	Polyclonal
<b>Calculated MW</b>	47999

## Additional Information

---

<b>Gene ID</b>	55148
<b>Alias Symbol</b>	FLJ10483, MGC9518, C14orf130
<b>Other Names</b>	Putative E3 ubiquitin-protein ligase UBR7, 6.3.2.-, N-recognin-7, UBR7, C14orf130
<b>Format</b>	Liquid. Purified antibody supplied in 1x PBS buffer with 0.09% (w/v) sodium azide and 2% sucrose.
<b>Reconstitution &amp; Storage</b>	Add 100 ul of distilled water. Final anti-C14orf130 antibody concentration is 1 mg/ml in PBS buffer with 2% sucrose. For longer periods of storage, store at 20°C. Avoid repeat freeze-thaw cycles.
<b>Precautions</b>	C14orf130 antibody - middle region is for research use only and not for use in diagnostic or therapeutic procedures.

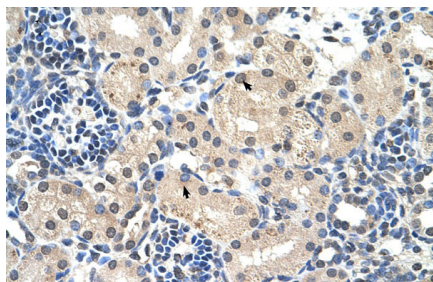
## Protein Information

---

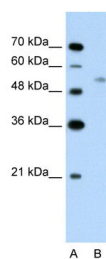
<b>Name</b>	UBR7
<b>Synonyms</b>	C14orf130
<b>Function</b>	E3 ubiquitin-protein ligase which is a component of the N-end rule pathway. Recognizes and binds to proteins bearing specific N- terminal residues that are destabilizing according to the N-end rule, leading to their ubiquitination and subsequent degradation.
<b>Tissue Location</b>	Expressed in sperm (at protein level).

## Images

---



Human kidney



WB Suggested Anti-C14orf130 Antibody Titration:  
2.5µg/ml

Positive Control: Jurkat cell lysate

UBR7 is supported by BioGPS gene expression data to be  
expressed in Jurkat

Please note: All products are 'FOR RESEARCH USE ONLY. NOT FOR USE IN DIAGNOSTIC OR THERAPEUTIC PROCEDURES'.