

RNF186 antibody - middle region

Rabbit Polyclonal Antibody

Catalog # AI12249

Product Information

Application	WB
Primary Accession	Q9NXI6
Other Accession	NM_019062 , NP_061935
Reactivity	Human, Guinea Pig, Horse
Predicted	Human
Host	Rabbit
Clonality	Polyclonal
Calculated MW	24145

Additional Information

Gene ID	54546
Alias Symbol	FLJ20225, RP11-91K11.1
Other Names	RING finger protein 186, RNF186
Format	Liquid. Purified antibody supplied in 1x PBS buffer with 0.09% (w/v) sodium azide and 2% sucrose.
Reconstitution & Storage	Add 50 ul of distilled water. Final anti-RNF186 antibody concentration is 1 mg/ml in PBS buffer with 2% sucrose. For longer periods of storage, store at 20°C. Avoid repeat freeze-thaw cycles.
Precautions	RNF186 antibody - middle region is for research use only and not for use in diagnostic or therapeutic procedures.

Protein Information

Name	RNF186 (HGNC:25978)
Function	E3 ubiquitin protein ligase that is part of an apoptotic signaling pathway activated by endoplasmic reticulum stress (PubMed: 23896122). Stimulates the expression of proteins specific of the unfolded protein response (UPR), ubiquitinates BNIP1 and regulates its localization to the mitochondrion and induces calcium release from the endoplasmic reticulum that ultimately leads to cell apoptosis (PubMed: 23896122). Plays a role in the maintenance of intestinal homeostasis and clearance of enteric pathogens. Upon NOD2 stimulation, ubiquitinates the ER stress sensor activating transcription factor 6/ATF6 and promotes the unfolded protein response UPR (PubMed: 34623328). Participates in basal level of autophagy maintenance by regulating the ubiquitination of EPHB2 and EPHB3. Upon stimulation by

ligand EFNB1, ubiquitinates EPHB2 and further recruits MAP1LC3B for autophagy induction (PubMed:[33280498](#)). Controls nutrient sensing by ubiquitinating Sestrin-2/SESN2, which is an intracellular sensor of cytosolic leucine and inhibitor of mTORC1 activity (PubMed:[31586034](#)).

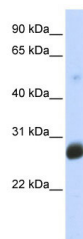
Cellular Location

Endoplasmic reticulum membrane; Multi-pass membrane protein

References

Gregory,S.G.,(2006)Nature441(7091),315-321 ReconstitutionandStorage:Forshorttermuse,storeat2-8Cupto1week.Forlongtermstorage,storeat-20Cinsmallaliquotstopreventfreeze-thawcycles.

Images



WB Suggested Anti-RNF186 Antibody Titration: 0.2-1
µg/ml
ELISA Titer: 1:62500
Positive Control: Transfected 293T

Please note: All products are 'FOR RESEARCH USE ONLY. NOT FOR USE IN DIAGNOSTIC OR THERAPEUTIC PROCEDURES'.