

DTX2 antibody - C-terminal region

Rabbit Polyclonal Antibody

Catalog # AI12253

Product Information

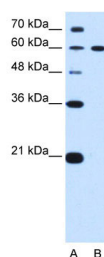
Application	WB
Primary Accession	Q6XM87
Other Accession	NM_001102596 , NP_001096066
Reactivity	Human, Mouse, Rat, Rabbit, Zebrafish, Goat, Dog, Guinea Pig, Horse, Bovine
Predicted	Human, Mouse, Rat, Pig, Chicken, Goat, Dog, Horse, Bovine
Host	Rabbit
Clonality	Polyclonal
Calculated MW	62 KDa

Additional Information

Alias Symbol	KIAA1528, MGC71098, RNF58
Format	Liquid. Purified antibody supplied in 1x PBS buffer with 0.09% (w/v) sodium azide and 2% sucrose.
Reconstitution & Storage	Add 50 ul of distilled water. Final anti-DTX2 antibody concentration is 1 mg/ml in PBS buffer with 2% sucrose. For longer periods of storage, store at 20°C. Avoid repeat freeze-thaw cycles.
Precautions	DTX2 antibody - C-terminal region is for research use only and not for use in diagnostic or therapeutic procedures.

Protein Information

Images



WB Suggested Anti-DTX2 Antibody Titration: 0.2-1 µg/ml
Positive Control: HepG2 cell lysate