

RNF25 antibody - middle region

Rabbit Polyclonal Antibody

Catalog # AI12255

Product Information

Application	WB, IHC
Primary Accession	Q96BH1
Other Accession	NM_022453 , NP_071898
Reactivity	Human, Mouse, Rat, Rabbit, Dog, Guinea Pig, Horse, Bovine
Predicted	Human, Mouse, Rat, Pig, Dog, Horse, Bovine
Host	Rabbit
Clonality	Polyclonal
Calculated MW	51219

Additional Information

Gene ID	64320
Alias Symbol	AO7, FLJ13906
Other Names	E3 ubiquitin-protein ligase RNF25, 6.3.2.-, RING finger protein 25, RNF25
Format	Liquid. Purified antibody supplied in 1x PBS buffer with 0.09% (w/v) sodium azide and 2% sucrose.
Reconstitution & Storage	Add 50 ul of distilled water. Final anti-RNF25 antibody concentration is 1 mg/ml in PBS buffer with 2% sucrose. For longer periods of storage, store at 20°C. Avoid repeat freeze-thaw cycles.
Precautions	RNF25 antibody - middle region is for research use only and not for use in diagnostic or therapeutic procedures.

Protein Information

Name	RNF25 {ECO:0000303 PubMed:36638793, ECO:0000312 HGNC:HGNC:14662}
Function	E3 ubiquitin-protein ligase that plays a key role in the RNF14-RNF25 translation quality control pathway, a pathway that takes place when a ribosome has stalled during translation, and which promotes ubiquitination and degradation of translation factors on stalled ribosomes (PubMed: 36638793 , PubMed: 37651229 , PubMed: 37951216). Catalyzes ubiquitination of RPS27A in response to ribosome collisions, promoting activation of RNF14 (PubMed: 36638793). RNF25 catalyzes ubiquitination of other ribosomal proteins on stalled ribosomes, such as RPL0, RPL1, RPL12, RPS13 and RPS17 (PubMed: 36638793). Also involved in ubiquitination and degradation of stalled ETF1/eRF1 (PubMed: 36638793 , PubMed: 37651229).

Independently of its function in the response to stalled ribosomes, mediates ubiquitination and subsequent proteasomal degradation of NDK2 (By similarity). May also stimulate transcription mediated by NF-kappa-B via its interaction with RELA/p65 (PubMed:[12748188](#)).

Cellular Location

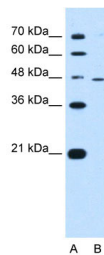
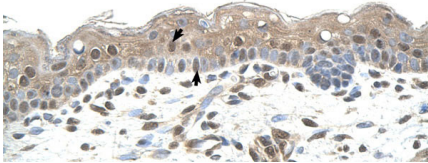
Cytoplasm {ECO:0000250|UniProtKB:Q7SXJ6}.

References

Asamitsu,K.,(2003)J.Biol.Chem.278(29),26879-26887ReconstitutionandStorage:Forshorttermuse,storeat2-8Cupto1week.Forlongtermstorage,storeat-20Cinsmallaliquotstopreventfreeze-thawcycles.

Images

Human Skin



WB Suggested Anti-RNF25 Antibody Titration: 0.5 µg/ml
Positive Control: HepG2 cell lysate
RNF25 is supported by BioGPS gene expression data to be expressed in HepG2

Please note: All products are 'FOR RESEARCH USE ONLY. NOT FOR USE IN DIAGNOSTIC OR THERAPEUTIC PROCEDURES'.