

LOC100360800 Antibody - C-terminal region

Rabbit Polyclonal Antibody

Catalog # AI12256

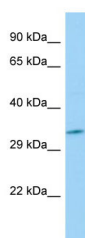
Product Information

Application	WB
Other Accession	XM_002728026 , XP_002728072
Reactivity	Human, Mouse, Rat, Rabbit, Zebrafish, Pig, Dog, Guinea Pig, Horse, Bovine, Yeast
Predicted	Human, Mouse, Rat, Rabbit, Zebrafish, Pig, Dog, Guinea Pig, Horse, Bovine, Yeast
Host	Rabbit
Clonality	Polyclonal
Calculated MW	35 kDa

Additional Information

Format	Liquid. Purified antibody supplied in 1x PBS buffer with 0.09% (w/v) sodium azide and 2% sucrose.
Reconstitution & Storage	Add 50 ul of distilled water. Final anti-LOC100360800 antibody concentration is 1 mg/ml in PBS buffer with 2% sucrose. For longer periods of storage, store at 20°C. Avoid repeat freeze-thaw cycles.
Precautions	LOC100360800 Antibody - C-terminal region is for research use only and not for use in diagnostic or therapeutic procedures.

Images



Host: Rabbit
Target Name: LOC100360800
Sample Tissue: Rat pancreas lysates
Antibody Dilution: 1.0µg/ml

Please note: All products are 'FOR RESEARCH USE ONLY. NOT FOR USE IN DIAGNOSTIC OR THERAPEUTIC PROCEDURES'.