

RNF170 antibody - middle region

Rabbit Polyclonal Antibody

Catalog # AI12265

Product Information

Application	WB
Primary Accession	Q96K19
Other Accession	NM_030954 , NP_112216
Reactivity	Human, Mouse, Rat, Rabbit, Dog, Horse, Bovine
Predicted	Human, Mouse, Dog, Bovine
Host	Rabbit
Clonality	Polyclonal
Calculated MW	29815

Additional Information

Gene ID	81790
Alias Symbol	DKFZP564A022, FLJ38306
Other Names	E3 ubiquitin-protein ligase RNF170, 6.3.2.-, Putative LAG1-interacting protein, RING finger protein 170, RNF170
Format	Liquid. Purified antibody supplied in 1x PBS buffer with 0.09% (w/v) sodium azide and 2% sucrose.
Reconstitution & Storage	Add 50 ul of distilled water. Final anti-RNF170 antibody concentration is 1 mg/ml in PBS buffer with 2% sucrose. For longer periods of storage, store at 20°C. Avoid repeat freeze-thaw cycles.
Precautions	RNF170 antibody - middle region is for research use only and not for use in diagnostic or therapeutic procedures.

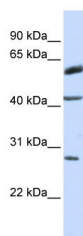
Protein Information

Name	RNF170
Function	E3 ubiquitin-protein ligase that plays an essential role in stimulus-induced inositol 1,4,5-trisphosphate receptor type 1 (ITPR1) ubiquitination and degradation via the endoplasmic reticulum-associated degradation (ERAD) pathway. Also involved in ITPR1 turnover in resting cells. Selectively inhibits the TLR3-triggered innate immune response by promoting the 'Lys-48'-linked polyubiquitination and degradation of TLR3 (PubMed: 31076723).
Cellular Location	Endoplasmic reticulum membrane; Multi-pass membrane protein
Tissue Location	Expressed in the spinal cord.

References

Gerhard,D.S.,GenomeRes.14(10B),2121-2127(2004)ReconstitutionandStorage:Forshorttermuse,storeat2-8Cupto1week.Forlongtermstorage,storeat-20Cin small aliquots to prevent freeze-thaw cycles.

Images



WB Suggested Anti-RNF170 Antibody Titration: 0.2-1
µg/ml
ELISA Titer: 1:312500
Positive Control: MCF7 cell lysate

Please note: All products are 'FOR RESEARCH USE ONLY. NOT FOR USE IN DIAGNOSTIC OR THERAPEUTIC PROCEDURES'.