

# Ube2e2 Antibody - N-terminal region

Rabbit Polyclonal Antibody

Catalog # AI12277

## Product Information

<b>Application</b>	WB
<b>Primary Accession</b>	<a href="#">Q91W82</a>
<b>Other Accession</b>	<a href="#">NM_144839</a> , <a href="#">NP_659088</a>
<b>Reactivity</b>	Human, Mouse, Rat, Rabbit, Zebrafish, Pig, Dog, Guinea Pig, Horse, Bovine, Sheep
<b>Predicted</b>	Human, Mouse, Rat, Rabbit, Zebrafish, Pig, Dog, Guinea Pig, Horse, Bovine, Sheep
<b>Host</b>	Rabbit
<b>Clonality</b>	Polyclonal
<b>Calculated MW</b>	22241

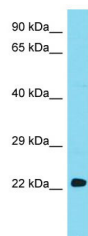
## Additional Information

<b>Gene ID</b>	218793
<b>Alias Symbol</b>	BC016265
<b>Other Names</b>	Ubiquitin-conjugating enzyme E2 E2, 6.3.2.19, Ubiquitin carrier protein E2, Ubiquitin-protein ligase E2, Ube2e2
<b>Format</b>	Liquid. Purified antibody supplied in 1x PBS buffer with 0.09% (w/v) sodium azide and 2% sucrose.
<b>Reconstitution &amp; Storage</b>	Add 50 ul of distilled water. Final anti-Ube2e2 antibody concentration is 1 mg/ml in PBS buffer with 2% sucrose. For longer periods of storage, store at 20°C. Avoid repeat freeze-thaw cycles.
<b>Precautions</b>	Ube2e2 Antibody - N-terminal region is for research use only and not for use in diagnostic or therapeutic procedures.

## Protein Information

<b>Name</b>	Ube2e2
<b>Function</b>	Accepts ubiquitin from the E1 complex and catalyzes its covalent attachment to other proteins. In vitro catalyzes 'Lys-11'- and 'Lys-48'-, as well as 'Lys-63'-linked polyubiquitination. Catalyzes the ISGylation of influenza A virus NS1 protein.

## Images



Host: Rabbit  
Target Name: Ube2e2  
Sample Tissue: Mouse Heart lysates  
Antibody Dilution: 1.0µg/ml

Please note: All products are 'FOR RESEARCH USE ONLY. NOT FOR USE IN DIAGNOSTIC OR THERAPEUTIC PROCEDURES'.