

March3 antibody - C-terminal region

Rabbit Polyclonal Antibody

Catalog # AI12279

Product Information

Application	WB
Primary Accession	Q8BRX9
Other Accession	NM_177115 , NP_796089
Reactivity	Human, Mouse, Rat, Rabbit, Zebrafish, Pig, Dog, Guinea Pig, Horse, Bovine
Predicted	Human, Mouse, Rat, Rabbit, Zebrafish, Pig, Dog, Guinea Pig, Horse, Bovine
Host	Rabbit
Clonality	Polyclonal
Calculated MW	24491

Additional Information

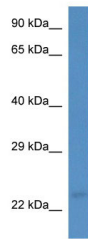
Gene ID	320253
Alias Symbol	6330411I15Rik, A530081L18Rik, AI843639, MARCH-III, MGC130167, MGC130168
Other Names	E3 ubiquitin-protein ligase MARCH3, 6.3.2.-, Membrane-associated RING finger protein 3, Membrane-associated RING-CH protein III, MARCH-III, March3
Format	Liquid. Purified antibody supplied in 1x PBS buffer with 0.09% (w/v) sodium azide and 2% sucrose.
Reconstitution & Storage	Add 50 ul of distilled water. Final anti-March3 antibody concentration is 1 mg/ml in PBS buffer with 2% sucrose. For longer periods of storage, store at 20°C. Avoid repeat freeze-thaw cycles.
Precautions	March3 antibody - C-terminal region is for research use only and not for use in diagnostic or therapeutic procedures.

Protein Information

Name	Marchf3
Synonyms	March3
Function	E3 ubiquitin-protein ligase which may be involved in endosomal trafficking. E3 ubiquitin ligases accept ubiquitin from an E2 ubiquitin-conjugating enzyme in the form of a thioester and then directly transfer the ubiquitin to targeted substrates.
Cellular Location	Cytoplasmic vesicle membrane; Multi-pass membrane protein. Early

endosome membrane; Multi-pass membrane protein

Images



WB Suggested Anti-March3 Antibody Titration: 1.0 µg/ml
Positive Control: Mouse Kidney

Please note: All products are 'FOR RESEARCH USE ONLY. NOT FOR USE IN DIAGNOSTIC OR THERAPEUTIC PROCEDURES'.