

Dtx3 antibody - C-terminal region

Rabbit Polyclonal Antibody

Catalog # AI12280

Product Information

Application	WB
Primary Accession	Q80V91
Other Accession	NM_030714 , NP_109639
Reactivity	Human, Mouse, Rat, Rabbit, Zebrafish, Pig, Dog, Guinea Pig, Horse, Bovine
Predicted	Human, Mouse, Rat, Rabbit, Pig, Dog, Guinea Pig, Bovine
Host	Rabbit
Clonality	Polyclonal
Calculated MW	37982

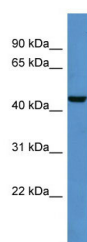
Additional Information

Gene ID	80904
Alias Symbol	Deltex3, MGC106339, mg310
Other Names	Probable E3 ubiquitin-protein ligase DTX3, 6.3.2.-, Protein deltex-3, Deltex3, mDTX3, Dtx3
Format	Liquid. Purified antibody supplied in 1x PBS buffer with 0.09% (w/v) sodium azide and 2% sucrose.
Reconstitution & Storage	Add 50 ul of distilled water. Final anti-Dtx3 antibody concentration is 1 mg/ml in PBS buffer with 2% sucrose. For longer periods of storage, store at 20°C. Avoid repeat freeze-thaw cycles.
Precautions	Dtx3 antibody - C-terminal region is for research use only and not for use in diagnostic or therapeutic procedures.

Protein Information

Name	Dtx3
Function	Regulator of Notch signaling, a signaling pathway involved in cell-cell communications that regulates a broad spectrum of cell-fate determinations. Probably acts both as a positive and negative regulator of Notch, depending on the developmental and cell context. Functions as a ubiquitin ligase protein in vitro, suggesting that it may regulate the Notch pathway via some ubiquitin ligase activity.
Cellular Location	Cytoplasm.
Tissue Location	Strongly expressed in testis and brain. Weakly expressed in kidney.

Images



WB Suggested Anti-Dtx3 Antibody Titration: 0.2-1 µg/ml
ELISA Titer: 1:62500
Positive Control: Mouse Brain

Please note: All products are 'FOR RESEARCH USE ONLY. NOT FOR USE IN DIAGNOSTIC OR THERAPEUTIC PROCEDURES'.