

AADAT antibody - N-terminal region

Rabbit Polyclonal Antibody

Catalog # AI12289

Product Information

Application	WB, IHC
Primary Accession	Q8N5Z0
Other Accession	NM_016228 , NP_057312
Reactivity	Human, Mouse, Rat, Rabbit, Zebrafish, Pig, Dog, Horse, Bovine
Predicted	Human, Mouse, Rat, Rabbit, Chicken, Dog, Bovine
Host	Rabbit
Clonality	Polyclonal
Calculated MW	47352

Additional Information

Gene ID	51166
Alias Symbol	KAT2, KATII
Other Names	Kynurenine/alpha-aminoadipate aminotransferase, mitochondrial, KAT/AadAT, 2-aminoadipate aminotransferase, 2-aminoadipate transaminase, 2.6.1.39, Alpha-aminoadipate aminotransferase, AadAT, Kynurenine aminotransferase II, Kynurenine--oxoglutarate aminotransferase II, Kynurenine--oxoglutarate transaminase 2, 2.6.1.7, Kynurenine--oxoglutarate transaminase II, AADAT, KAT2
Format	Liquid. Purified antibody supplied in 1x PBS buffer with 0.09% (w/v) sodium azide and 2% sucrose.
Reconstitution & Storage	Add 100 ul of distilled water. Final anti-AADAT antibody concentration is 1 mg/ml in PBS buffer with 2% sucrose. For longer periods of storage, store at 20°C. Avoid repeat freeze-thaw cycles.
Precautions	AADAT antibody - N-terminal region is for research use only and not for use in diagnostic or therapeutic procedures.

Protein Information

Name	AADAT (HGNC:17929)
Function	Transaminase with broad substrate specificity. Has transaminase activity towards aminoadipate, kynurenine, methionine and glutamate. Shows activity also towards tryptophan, aspartate and hydroxykynurenine. Accepts a variety of oxo-acids as amino-group acceptors, with a preference for 2-oxoglutarate, 2-oxocaproic acid, phenylpyruvate and alpha-oxo-gamma-methiol butyric acid. Can also use glyoxylate as amino-group acceptor (in vitro).

Cellular Location

Mitochondrion.

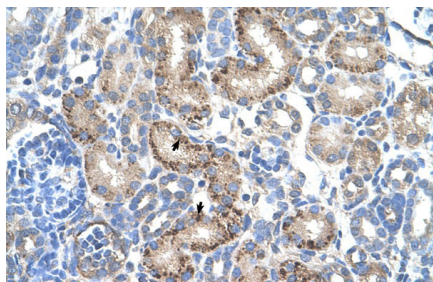
Tissue Location

Higher expression in the liver. Also found in heart, brain, kidney, pancreas, prostate, testis and ovary

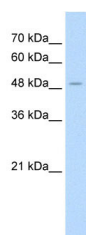
References

Goh,D.L.,(2002)Mol.Genet.Metab.76(3),172-180ReconstitutionandStorage:Forshorttermuse,storeat2-8Cupto1 week.Forlongtermstorage,storeat-20Cinsmallaliquotstopreventfreeze-thawcycles.

Images



Human kidney



WB Suggested Anti-AADAT Antibody Titration: 1.25µg/ml
Positive Control: HepG2 cell lysate

Please note: All products are 'FOR RESEARCH USE ONLY. NOT FOR USE IN DIAGNOSTIC OR THERAPEUTIC PROCEDURES'.