

# Dpy19l1 antibody - C-terminal region

Rabbit Polyclonal Antibody

Catalog # AI12293

## Product Information

<b>Application</b>	WB
<b>Primary Accession</b>	<a href="#">A6X919</a>
<b>Other Accession</b>	<a href="#">NM_172920</a> , <a href="#">NP_766508</a>
<b>Reactivity</b>	Human, Mouse, Rat, Rabbit, Zebrafish, Dog, Guinea Pig, Horse, Bovine
<b>Predicted</b>	Rat, Rabbit, Zebrafish, Chicken, Dog, Guinea Pig, Horse, Bovine
<b>Host</b>	Rabbit
<b>Clonality</b>	Polyclonal
<b>Calculated MW</b>	84187

## Additional Information

<b>Gene ID</b>	244745
<b>Alias Symbol</b>	1100001I19Rik, 6030402K12, AI225861, AW558481
<b>Other Names</b>	Probable C-mannosyltransferase DPY19L1, 2.4.1.-, Dpy-19-like protein 1, Protein dpy-19 homolog 1, Dpy19l1
<b>Format</b>	Liquid. Purified antibody supplied in 1x PBS buffer with 0.09% (w/v) sodium azide and 2% sucrose.
<b>Reconstitution &amp; Storage</b>	Add 50 ul of distilled water. Final anti-Dpy19l1 antibody concentration is 1 mg/ml in PBS buffer with 2% sucrose. For longer periods of storage, store at 20°C. Avoid repeat freeze-thaw cycles.
<b>Precautions</b>	Dpy19l1 antibody - C-terminal region is for research use only and not for use in diagnostic or therapeutic procedures.

## Protein Information

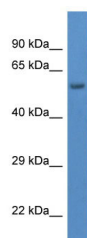
<b>Name</b>	Dpy19l1
<b>Function</b>	C-mannosyltransferase that mediates the C-mannosylation tryptophan residues on target proteins. The reaction occurs on the luminal side of the endoplasmic reticulum and involves the transfer of a mannose unit from a dolichylphosphate mannose (Dol-P-Man) donor to an acceptor protein containing a WxxW consensus sequence (PubMed: <a href="#">28202721</a> ). C-mannosylates the first two tryptophans in the WxxWxxWxxC sequence motif in thrombospondin (TSP) type-1 repeats of UNC5A (PubMed: <a href="#">28202721</a> ). Regulates neurite extension during development (PubMed: <a href="#">27959946</a> , PubMed: <a href="#">28202721</a> ).

**Cellular Location**

Endoplasmic reticulum membrane; Multi-pass membrane protein

**Images**

---



WB Suggested Anti-Dpy19I1 Antibody Titration: 1.0 µg/ml  
Positive Control: Mouse Brain

Please note: All products are 'FOR RESEARCH USE ONLY. NOT FOR USE IN DIAGNOSTIC OR THERAPEUTIC PROCEDURES'.