

Gcdh antibody - C-terminal region

Rabbit Polyclonal Antibody

Catalog # AI12299

Product Information

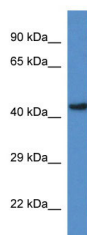
Application	WB
Primary Accession	D3ZT90
Other Accession	NM_001108896 , NP_001102366
Reactivity	Human, Mouse, Rat, Rabbit, Zebrafish, Pig, Dog, Guinea Pig, Horse, Bovine
Predicted	Human, Mouse, Rat, Rabbit, Pig, Dog, Guinea Pig, Horse, Bovine
Host	Rabbit
Clonality	Polyclonal
Calculated MW	49 kDa

Additional Information

Alias Symbol	Gcdh
Format	Liquid. Purified antibody supplied in 1x PBS buffer with 0.09% (w/v) sodium azide and 2% sucrose.
Reconstitution & Storage	Add 50 ul of distilled water. Final anti-Gcdh antibody concentration is 1 mg/ml in PBS buffer with 2% sucrose. For longer periods of storage, store at 20°C. Avoid repeat freeze-thaw cycles.
Precautions	Gcdh antibody - C-terminal region is for research use only and not for use in diagnostic or therapeutic procedures.

Protein Information

Images



WB Suggested Anti-Gcdh Antibody Titration: 1.0 µg/ml
Positive Control: Rat Brain