

PCYT2 antibody - C-terminal region

Rabbit Polyclonal Antibody

Catalog # AI12300

Product Information

Application	WB
Primary Accession	Q99447
Other Accession	NM_002861 , NP_002852
Reactivity	Human, Mouse, Rat, Zebrafish, Dog, Guinea Pig, Horse, Bovine
Predicted	Human, Mouse, Chicken, Dog, Guinea Pig, Horse
Host	Rabbit
Clonality	Polyclonal
Calculated MW	43835

Additional Information

Gene ID	5833
Alias Symbol	ET
Other Names	Ethanolamine-phosphate cytidylyltransferase, 2.7.7.14, CTP:phosphoethanolamine cytidylyltransferase, Phosphorylethanolamine transferase, PCYT2
Format	Liquid. Purified antibody supplied in 1x PBS buffer with 0.09% (w/v) sodium azide and 2% sucrose.
Reconstitution & Storage	Add 100 ul of distilled water. Final anti-PCYT2 antibody concentration is 1 mg/ml in PBS buffer with 2% sucrose. For longer periods of storage, store at 20°C. Avoid repeat freeze-thaw cycles.
Precautions	PCYT2 antibody - C-terminal region is for research use only and not for use in diagnostic or therapeutic procedures.

Protein Information

Name	PCYT2
Function	Ethanolamine-phosphate cytidylyltransferase that catalyzes the second step in the synthesis of phosphatidylethanolamine (PE) from ethanolamine via the CDP-ethanolamine pathway (PubMed: 31637422 , PubMed: 9083101). Phosphatidylethanolamine is a dominant inner-leaflet phospholipid in cell membranes, where it plays a role in membrane function by structurally stabilizing membrane-anchored proteins, and participates in important cellular processes such as cell division, cell fusion, blood coagulation, and apoptosis (PubMed: 9083101).

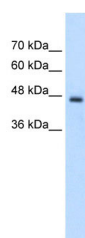
Tissue Location

Strongest expression in liver, heart, and skeletal muscle.

References

Johnson, C.M., (2005) Biochim. Biophys. Acta 1735(3), 230-235 Reconstitution and Storage: For short term use, store at 2-8°C up to 1 week. For long term storage, store at -20°C in small aliquots to prevent freeze-thaw cycles.

Images



WB Suggested Anti-PCYT2 Antibody Titration: 2.5 µg/ml
Positive Control: Jurkat cell lysate

Please note: All products are 'FOR RESEARCH USE ONLY. NOT FOR USE IN DIAGNOSTIC OR THERAPEUTIC PROCEDURES'.