

Abcb10 antibody - N-terminal region

Rabbit Polyclonal Antibody

Catalog # AI12311

Product Information

| | |
|--------------------------|---|
| Application | WB |
| Primary Accession | Q9JI39 |
| Other Accession | NM_019552 , NP_062425 |
| Reactivity | Human, Mouse, Rat, Rabbit, Zebrafish, Pig, Goat, Dog, Guinea Pig, Horse, Bovine |
| Predicted Host | Rat, Rabbit, Zebrafish, Pig, Chicken, Dog, Guinea Pig, Horse, Bovine |
| Clonality | Rabbit |
| Calculated MW | Polyclonal 77188 |

Additional Information

| | |
|-------------------------------------|---|
| Gene ID | 56199 |
| Alias Symbol | AU016331, Abc-me, Abcb12, C76534 |
| Other Names | ATP-binding cassette sub-family B member 10, mitochondrial, ABC-mitochondrial erythroid protein, ABC-me protein, ATP-binding cassette transporter 10, ABC transporter 10 protein, Abcb10 |
| Format | Liquid. Purified antibody supplied in 1x PBS buffer with 0.09% (w/v) sodium azide and 2% sucrose. |
| Reconstitution & Storage | Add 50 ul of distilled water. Final anti-Abcb10 antibody concentration is 1 mg/ml in PBS buffer with 2% sucrose. For longer periods of storage, store at 20°C. Avoid repeat freeze-thaw cycles. |
| Precautions | Abcb10 antibody - N-terminal region is for research use only and not for use in diagnostic or therapeutic procedures. |

Protein Information

| | |
|-----------------|---|
| Name | Abcb10 {ECO:0000312 MGI:MGI:1860508} |
| Function | ATP-dependent transporter located in the mitochondrial inner membrane that catalyzes the export of biliverdin from the mitochondrial matrix, and plays a crucial role in hemoglobin synthesis and antioxidative stress (PubMed: 22240895 , PubMed: 24421385 , PubMed: 26053025 , PubMed: 28808058 , PubMed: 34011630). Participates in the early step of the heme biosynthetic process during insertion of iron into protoporphyrin IX (PPIX) (PubMed: 24421385 , PubMed: 28808058). Involved in the stabilization of the iron transporter mitoferrin-1/SLC25A37 (PubMed: 19805291). In addition |

may be involved in mitochondrial unfolded protein response (UPRmt) signaling pathway, although ABCB10 probably does not participate in peptide export from mitochondria (By similarity).

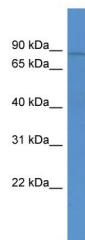
Cellular Location

Mitochondrion inner membrane; Multi-pass membrane protein {ECO:0000250|UniProtKB:Q9NRK6}

Tissue Location

Expressed at particularly high levels in fetal liver, and erythroid tissues of embryos and adults. Found also in adult bone marrow, liver and kidney, and at lower levels in heart, brain and spleen.

Images



WB Suggested Anti-Abcb10 Antibody Titration: 0.2-1
µg/ml
ELISA Titer: 1:312500
Positive Control: Mouse Spleen

Please note: All products are 'FOR RESEARCH USE ONLY. NOT FOR USE IN DIAGNOSTIC OR THERAPEUTIC PROCEDURES'.