

SLC25A20 antibody - C-terminal region

Rabbit Polyclonal Antibody

Catalog # AI12317

Product Information

Application	WB
Primary Accession	P97521
Other Accession	NM_000387 , NP_000378
Reactivity	Human, Mouse, Rat, Rabbit, Zebrafish, Pig, Dog, Guinea Pig, Horse, Bovine, Sheep
Predicted Host	Human, Mouse, Rat, Zebrafish, Chicken, Dog, Bovine, Sheep
Clonality	Rabbit
Calculated MW	Polyclonal 33154

Additional Information

Alias Symbol	CAC, CACT
Other Names	Mitochondrial carnitine/acylcarnitine carrier protein, Carnitine/acylcarnitine translocase, CAC, Solute carrier family 25 member 20, Slc25a20, Cact
Format	Liquid. Purified antibody supplied in 1x PBS buffer with 0.09% (w/v) sodium azide and 2% sucrose.
Reconstitution & Storage	Add 50 ul of distilled water. Final anti-SLC25A20 antibody concentration is 1 mg/ml in PBS buffer with 2% sucrose. For longer periods of storage, store at 20°C. Avoid repeat freeze-thaw cycles.
Precautions	SLC25A20 antibody - C-terminal region is for research use only and not for use in diagnostic or therapeutic procedures.

Protein Information

Name	Slc25a20 {ECO:0000312 RGD:621443}
Synonyms	Cact
Function	Mediates the electroneutral exchange of acylcarnitines (O- acyl-(R)-carnitine or L-acylcarnitine) of different acyl chain lengths (ranging from O-acetyl-(R)-carnitine to long-chain O-acyl-(R)- carnitines) with free carnitine ((R)-carnitine or L-carnitine) across the mitochondrial inner membrane, via a ping-pong mechanism (PubMed: 9731180). Key player in the mitochondrial oxidation pathway, it translocates the fatty acids in the form of acylcarnitines into the mitochondrial matrix, where the carnitine palmitoyltransferase 2 (CPT- 2) activates them to undergo fatty acid beta-oxidation (Probable). Catalyzes the unidirectional transport (uniport) of carnitine at lower rates

than the antiport (exchange) (PubMed:[8305461](#)).

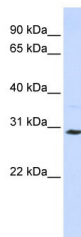
Cellular Location

Mitochondrion inner membrane; Multi-pass membrane protein

References

Pierre, G., J. Inherit. Metab. Dis. 30(5), 815 (2007) Reconstitution and Storage: For short term use, store at 2-8°C up to 1 week. For long term storage, store at -20°C in small aliquots to prevent freeze-thaw cycles.

Images



WB Suggested Anti-SLC25A20 Antibody Titration: 0.2-1 µg/ml

ELISA Titer: 1:312500

Positive Control: Jurkat cell lysate

SLC25A20 is supported by BioGPS gene expression data to be expressed in Jurkat

Please note: All products are 'FOR RESEARCH USE ONLY. NOT FOR USE IN DIAGNOSTIC OR THERAPEUTIC PROCEDURES'.