

# SLC10A5 antibody - C-terminal region

Rabbit Polyclonal Antibody

Catalog # AI12318

## Product Information

---

<b>Application</b>	WB, IHC
<b>Primary Accession</b>	<a href="#">Q5PT55</a>
<b>Other Accession</b>	<a href="#">NM_001010893</a> , <a href="#">NP_001010893</a>
<b>Reactivity</b>	Human, Rat, Pig, Horse
<b>Predicted</b>	Rat, Horse
<b>Host</b>	Rabbit
<b>Clonality</b>	Polyclonal
<b>Calculated MW</b>	48871

## Additional Information

---

<b>Gene ID</b>	347051
<b>Alias Symbol</b>	P5
<b>Other Names</b>	Sodium/bile acid cotransporter 5, Na(+)/bile acid cotransporter 5, Solute carrier family 10 member 5, SLC10A5
<b>Format</b>	Liquid. Purified antibody supplied in 1x PBS buffer with 0.09% (w/v) sodium azide and 2% sucrose.
<b>Reconstitution &amp; Storage</b>	Add 100 ul of distilled water. Final anti-SLC10A5 antibody concentration is 1 mg/ml in PBS buffer with 2% sucrose. For longer periods of storage, store at 20°C. Avoid repeat freeze-thaw cycles.
<b>Precautions</b>	SLC10A5 antibody - C-terminal region is for research use only and not for use in diagnostic or therapeutic procedures.

## Protein Information

---

<b>Name</b>	SLC10A5
<b>Cellular Location</b>	Membrane; Multi-pass membrane protein

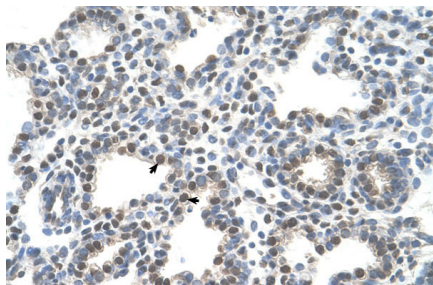
## References

---

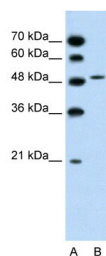
Ota, T., (2004) Nat. Genet. 36(1), 40-45  
Reconstitution and Storage: For short term use, store at 2-8°C up to 1 week. For long term storage, store at -20°C in small aliquots to prevent freeze-thaw cycles.

## Images

---



Human Lung



WB Suggested Anti-SLC10A5 Antibody Titration:  
1.25µg/ml  
Positive Control: Jurkat cell lysate

Please note: All products are 'FOR RESEARCH USE ONLY. NOT FOR USE IN DIAGNOSTIC OR THERAPEUTIC PROCEDURES'.