

SLC5A9 antibody - N-terminal region

Rabbit Polyclonal Antibody

Catalog # AI12319

Product Information

Application	WB
Primary Accession	Q2M3M2
Other Accession	NM_001011547 , NP_001011547
Reactivity	Human, Horse
Predicted	Human, Horse
Host	Rabbit
Clonality	Polyclonal
Calculated MW	74073

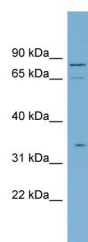
Additional Information

Gene ID	200010
Alias Symbol Other Names	MGC132517, MGC132523, SGLT4 Sodium/glucose cotransporter 4, Na(+)/glucose cotransporter 4, hSGLT4, Solute carrier family 5 member 9, SLC5A9, SGLT4
Format	Liquid. Purified antibody supplied in 1x PBS buffer with 0.09% (w/v) sodium azide and 2% sucrose.
Reconstitution & Storage	Add 50 ul of distilled water. Final anti-SLC5A9 antibody concentration is 1 mg/ml in PBS buffer with 2% sucrose. For longer periods of storage, store at 20°C. Avoid repeat freeze-thaw cycles.
Precautions	SLC5A9 antibody - N-terminal region is for research use only and not for use in diagnostic or therapeutic procedures.

Protein Information

Name	SLC5A9 {ECO:0000303 PubMed:15607332}
Function	Electrogenic Na(+)-coupled sugar symporter that may play a primary role in D-mannose and possibly D-fructose and D-glucose transport at the plasma membrane. Transporter activity is driven by a transmembrane Na(+) electrochemical gradient set by the Na(+)/K(+) pump. Exclusively recognizes sugar substrates having a pyranose ring with an axial hydroxyl group on carbon 2.
Cellular Location	Cell membrane; Multi-pass membrane protein
Tissue Location	Expressed in the small intestine, kidney and liver.

Images



WB Suggested Anti-SLC5A9 Antibody Titration: 0.2-1
µg/ml
ELISA Titer: 1:312500
Positive Control: PANC1 cell lysate

Please note: All products are 'FOR RESEARCH USE ONLY. NOT FOR USE IN DIAGNOSTIC OR THERAPEUTIC PROCEDURES'.