

Slc7a3 antibody - middle region

Rabbit Polyclonal Antibody

Catalog # AI12322

Product Information

Application	WB
Primary Accession	P70423
Other Accession	NM_007515 , NP_031541
Reactivity	Human, Mouse, Rat, Rabbit, Pig, Dog, Guinea Pig, Horse, Bovine
Predicted	Mouse, Rat, Rabbit, Pig, Chicken, Dog, Guinea Pig, Horse, Bovine
Host	Rabbit
Clonality	Polyclonal
Calculated MW	67460

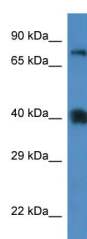
Additional Information

Gene ID	11989
Alias Symbol	Atrc3, CAT3, SLC7A1, SLC7A2
Other Names	Cationic amino acid transporter 3, CAT-3, CAT3, Cationic amino acid transporter y+, Solute carrier family 7 member 3, Slc7a3, Atrc3, Cat3
Format	Liquid. Purified antibody supplied in 1x PBS buffer with 0.09% (w/v) sodium azide and 2% sucrose.
Reconstitution & Storage	Add 50 ul of distilled water. Final anti-Slc7a3 antibody concentration is 1 mg/ml in PBS buffer with 2% sucrose. For longer periods of storage, store at 20°C. Avoid repeat freeze-thaw cycles.
Precautions	Slc7a3 antibody - middle region is for research use only and not for use in diagnostic or therapeutic procedures.

Protein Information

Name	Slc7a3 {ECO:0000312 MGI:MGI:1100521}
Synonyms	Atrc3, Cat3
Function	Uniporter that mediates the uptake of cationic L-amino acids such as L-arginine, L-lysine and L-ornithine (PubMed: 9334265). The transport is sodium ions- and pH-independent, moderately trans- stimulated and is mediated by passive diffusion (PubMed: 9334265).
Cellular Location	Cell membrane; Multi-pass membrane protein.
Tissue Location	Expressed in adult brain and in a wide variety of embryonic tissues.

Images



WB Suggested Anti-Slc7a3 Antibody Titration: 1.0 µg/ml
Positive Control: Mouse Spleen

Please note: All products are 'FOR RESEARCH USE ONLY. NOT FOR USE IN DIAGNOSTIC OR THERAPEUTIC PROCEDURES'.