

SLC37A4 antibody - N-terminal region

Rabbit Polyclonal Antibody

Catalog # AI12324

Product Information

Application	WB, IHC
Primary Accession	O43826
Other Accession	NM_001467 , NP_001458
Reactivity	Human, Mouse, Rat, Rabbit, Pig, Dog, Guinea Pig, Horse, Bovine
Predicted	Human, Mouse, Rat, Rabbit, Pig, Dog, Bovine
Host	Rabbit
Clonality	Polyclonal
Calculated MW	46360

Additional Information

Gene ID	2542
Alias Symbol	G6PT1, G6PT2, G6PT3, GSD1b, GSD1c, GSD1d, MGC15729, PRO0685, TRG19, TRG-19
Other Names	Glucose-6-phosphate translocase, Glucose-5-phosphate transporter, Solute carrier family 37 member 4, Transformation-related gene 19 protein, TRG-19, SLC37A4, G6PT, G6PT1
Format	Liquid. Purified antibody supplied in 1x PBS buffer with 0.09% (w/v) sodium azide and 2% sucrose.
Reconstitution & Storage	Add 50 ul of distilled water. Final anti-SLC37A4 antibody concentration is 1 mg/ml in PBS buffer with 2% sucrose. For longer periods of storage, store at 20°C. Avoid repeat freeze-thaw cycles.
Precautions	SLC37A4 antibody - N-terminal region is for research use only and not for use in diagnostic or therapeutic procedures.

Protein Information

Name	SLC37A4 (HGNC:4061)
Synonyms	G6PT, G6PT1
Function	Inorganic phosphate and glucose-6-phosphate antiporter of the endoplasmic reticulum. Transports cytoplasmic glucose-6-phosphate into the lumen of the endoplasmic reticulum and translocates inorganic phosphate into the opposite direction (PubMed: 33964207). Forms with glucose-6-phosphatase the complex responsible for glucose production through glycogenolysis and gluconeogenesis. Hence, it plays a central role in

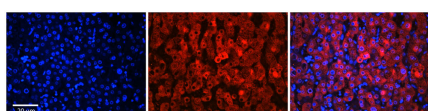
homeostatic regulation of blood glucose levels.

Cellular Location	Endoplasmic reticulum membrane; Multi-pass membrane protein
Tissue Location	Mostly expressed in liver and kidney.

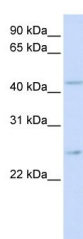
References

Fortier, S., (2008) FEBS Lett. 582(5), 799-804 Reconstitution and Storage: For short term use, store at 2-8°C up to 1 week. For long term storage, store at -20°C in small aliquots to prevent freeze-thaw cycles.

Images



Rabbit Anti-SLC37A4 Antibody
Formalin Fixed Paraffin Embedded Tissue: Human Adult Liver
Observed Staining: Cytoplasm in hepatocytes, moderate tissue distribution
Primary Antibody
Concentration: 1:100
Secondary Antibody: Donkey anti-Rabbit-Cy3
Secondary Antibody
Concentration: 1:200
Magnification: 20X
Exposure Time: 0.5 s 2.0 sec
Protocol located in Reviews and Data.



WB Suggested Anti-SLC37A4 Antibody Titration: 0.2-1 µg/ml
ELISA Titer: 1:312500
Positive Control: Human brain

Please note: All products are 'FOR RESEARCH USE ONLY. NOT FOR USE IN DIAGNOSTIC OR THERAPEUTIC PROCEDURES'.