

# SLC37A4 antibody - middle region

Rabbit Polyclonal Antibody

Catalog # AI12325

## Product Information

<b>Application</b>	WB, IHC
<b>Primary Accession</b>	<a href="#">O43826</a>
<b>Other Accession</b>	<a href="#">NM_001467</a> , <a href="#">NP_001458</a>
<b>Reactivity</b>	Human, Mouse, Rat, Rabbit, Pig, Dog, Horse, Bovine
<b>Predicted</b>	Human, Mouse, Rat, Rabbit, Pig, Dog, Bovine
<b>Host</b>	Rabbit
<b>Clonality</b>	Polyclonal
<b>Calculated MW</b>	46360

## Additional Information

<b>Gene ID</b>	2542
<b>Alias Symbol</b>	G6PT1, G6PT2, G6PT3, GSD1b, GSD1c, GSD1d, MGC15729, PRO0685, TRG19, TRG-19
<b>Other Names</b>	Glucose-6-phosphate translocase, Glucose-5-phosphate transporter, Solute carrier family 37 member 4, Transformation-related gene 19 protein, TRG-19, SLC37A4, G6PT, G6PT1
<b>Format</b>	Liquid. Purified antibody supplied in 1x PBS buffer with 0.09% (w/v) sodium azide and 2% sucrose.
<b>Reconstitution &amp; Storage</b>	Add 50 ul of distilled water. Final anti-SLC37A4 antibody concentration is 1 mg/ml in PBS buffer with 2% sucrose. For longer periods of storage, store at 20°C. Avoid repeat freeze-thaw cycles.
<b>Precautions</b>	SLC37A4 antibody - middle region is for research use only and not for use in diagnostic or therapeutic procedures.

## Protein Information

<b>Name</b>	SLC37A4 ( <a href="#">HGNC:4061</a> )
<b>Synonyms</b>	G6PT, G6PT1
<b>Function</b>	Inorganic phosphate and glucose-6-phosphate antiporter of the endoplasmic reticulum. Transports cytoplasmic glucose-6-phosphate into the lumen of the endoplasmic reticulum and translocates inorganic phosphate into the opposite direction (PubMed: <a href="#">33964207</a> ). Forms with glucose-6-phosphatase the complex responsible for glucose production through glycogenolysis and gluconeogenesis. Hence, it plays a central role in

homeostatic regulation of blood glucose levels.

## Cellular Location

Endoplasmic reticulum membrane; Multi-pass membrane protein

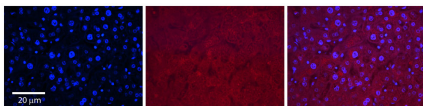
## Tissue Location

Mostly expressed in liver and kidney.

## References

Fortier, S., (2008) FEBS Lett. 582(5), 799-804 Reconstitution and Storage: For short term use, store at 2-8°C up to 1 week. For long term storage, store at -20°C in small aliquots to prevent freeze-thaw cycles.

## Images



Rabbit Anti-SLC37A4 Antibody

Formalin Fixed Paraffin Embedded Tissue: Human Adult Liver Observed Staining: Cytoplasm in hepatocytes, weak signal, low tissue distribution

Primary Antibody

Concentration: 1:100

Secondary Antibody: Donkey anti-Rabbit-Cy3

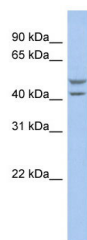
Secondary Antibody

Concentration: 1:200

Magnification: 20X

Exposure Time: 0.5 s 2.0 sec

Protocol located in Reviews and Data.



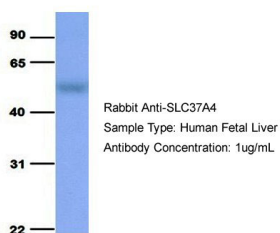
WB Suggested Anti-SLC37A4 Antibody Titration: 0.2-1 μg/ml

ELISA Titer: 1:62500

Positive Control: OVCAR-3 cell lysate

SLC37A4 is supported by BioGPS gene expression data to be expressed in OVCAR3

### SLC37A4



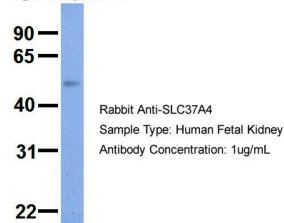
Host: Rabbit

Target Name: SLC37A4

Sample Tissue: Human Fetal Liver

Antibody Dilution: 1.0 μg/ml

### SLC37A4



Host: Rabbit

Target Name: SLC37A4

Sample Tissue: Human Fetal Kidney

Antibody Dilution: 1.0 μg/ml

Please note: All products are 'FOR RESEARCH USE ONLY. NOT FOR USE IN DIAGNOSTIC OR THERAPEUTIC PROCEDURES'.