

SLC29A2 antibody - C-terminal region

Rabbit Polyclonal Antibody

Catalog # AI12327

Product Information

Application	WB
Primary Accession	Q14542
Other Accession	NM_001532 , NP_001523
Reactivity	Human, Rat, Rabbit, Pig, Dog, Guinea Pig, Horse, Bovine
Predicted	Rabbit, Pig, Dog, Horse, Bovine
Host	Rabbit
Clonality	Polyclonal
Calculated MW	50113

Additional Information

Gene ID	3177
Alias Symbol	DER12, ENT2, HNP36
Other Names	Equilibrative nucleoside transporter 2, 36 kDa nucleolar protein HNP36, Delayed-early response protein 12, Equilibrative nitrobenzylmercaptapurine riboside-insensitive nucleoside transporter, Equilibrative NBMPR-insensitive nucleoside transporter, Hydrophobic nucleolar protein, 36 kDa, Nucleoside transporter, ei-type, Solute carrier family 29 member 2, SLC29A2, DER12, ENT2, HNP36
Format	Liquid. Purified antibody supplied in 1x PBS buffer with 0.09% (w/v) sodium azide and 2% sucrose.
Reconstitution & Storage	Add 50 ul of distilled water. Final anti-SLC29A2 antibody concentration is 1 mg/ml in PBS buffer with 2% sucrose. For longer periods of storage, store at 20°C. Avoid repeat freeze-thaw cycles.
Precautions	SLC29A2 antibody - C-terminal region is for research use only and not for use in diagnostic or therapeutic procedures.

Protein Information

Name	SLC29A2 (HGNC:11004)
Synonyms	DER12, ENT2, HNP36
Function	Bidirectional uniporter involved in the facilitative transport of nucleosides and nucleobases, and contributes to maintaining their cellular homeostasis (PubMed: 10722669 , PubMed: 12527552 , PubMed: 12590919 , PubMed: 16214850 , PubMed: 21795683 , PubMed: 9396714 , PubMed: 9478986).

Functions as a Na(+)-independent, passive transporter (PubMed:[9478986](#)). Involved in the transport of nucleosides such as inosine, adenosine, uridine, thymidine, cytidine and guanosine (PubMed:[10722669](#), PubMed:[12527552](#), PubMed:[12590919](#), PubMed:[16214850](#), PubMed:[21795683](#), PubMed:[9396714](#), PubMed:[9478986](#)). Also able to transport purine nucleobases (hypoxanthine, adenine, guanine) and pyrimidine nucleobases (thymine, uracil) (PubMed:[16214850](#), PubMed:[21795683](#)). Involved in nucleoside transport at basolateral membrane of kidney cells, allowing liver absorption of nucleoside metabolites (PubMed:[12527552](#)). Mediates apical nucleoside uptake into Sertoli cells, thereby regulating the transport of nucleosides in testis across the blood-testis-barrier (PubMed:[23639800](#)). Mediates both the influx and efflux of hypoxanthine in skeletal muscle microvascular endothelial cells to control the amount of intracellular hypoxanthine available for xanthine oxidase-mediated ROS production (By similarity).

Cellular Location

Apical cell membrane; Multi-pass membrane protein. Basolateral cell membrane; Multi-pass membrane protein. Note=Localized to the apical membrane of Sertoli cells.

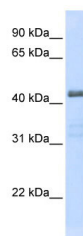
Tissue Location

Highly expressed in skeletal muscle (PubMed:[9478986](#)). Expressed in liver, lung, placenta, brain, heart, kidney and ovarian tissues (PubMed:[9478986](#)). Expressed in testis at the blood-brain-barrier (PubMed:[23639800](#)).

References

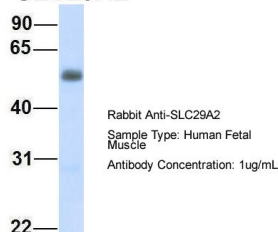
Bone,D.B.Am.J.Physiol.HeartCirc.Physiol.293(6),H3325-H3332(2007)ReconstitutionandStorage:Forshorttermuse,storeat2-8Cupto1week.Forlongtermstorage,storeat-20Cinsmallaliquotstopreventfreeze-thawcycles.

Images



WB Suggested Anti-SLC29A2 Antibody Titration: 0.2-1 µg/ml
ELISA Titer: 1:312500
Positive Control: Transfected 293T

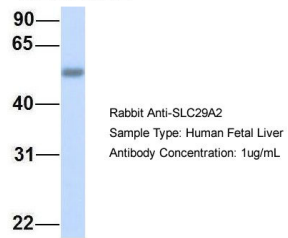
SLC29A2



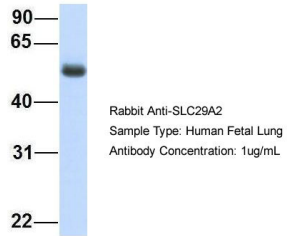
Host:Rabbit
Target Name:SLC29A2
Sample Tissue:Human Fetal Muscle
Antibody Dilution: 1.0µg/ml

Host:Rabbit
Target Name:SLC29A2
Sample Tissue:Human Fetal Liver
Antibody Dilution: 1.0µg/ml

SLC29A2



SLC29A2



Host: Rabbit
Target Name: SLC29A2
Sample Tissue: Human Fetal Lung
Antibody Dilution: 1.0 µg/ml

Please note: All products are 'FOR RESEARCH USE ONLY. NOT FOR USE IN DIAGNOSTIC OR THERAPEUTIC PROCEDURES'.